

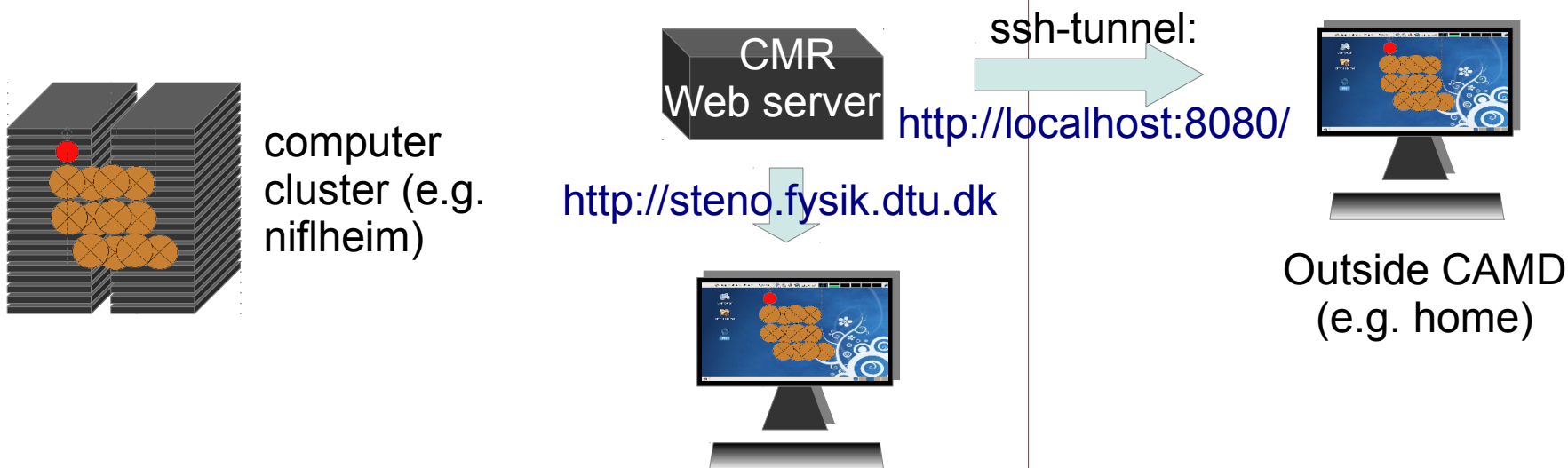
COMPUTATIONAL MATERIALS REPOSITORY

How to access the internal CAMD CMR Database from outside

Accessing the internal database

If you would like to access the internal CAMD database from **inside** you can just visit <http://steno.fysik.dtu.dk>. If you are outside, e.g. at home or through DTU wireless, you need to open a **ssh-tunnel** (see following slides).
Please note: this instruction is designed for CAMD members.

CAMD Intranet



Accessing the internal database

- Mac/Linux:

```
ssh xxx@demon.fysik.dtu.dk -L 8080:steno.fysik.dtu.dk:80
```

(xxx is your Niflheim username.)

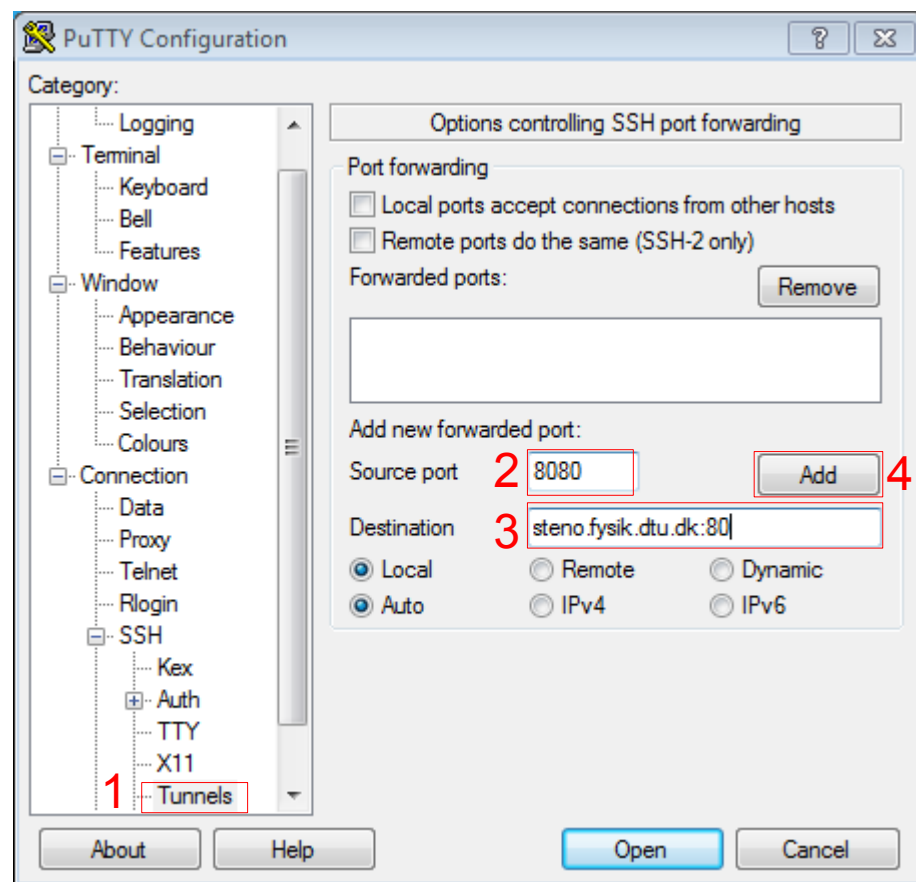
Accessing the internal database

- Windows:

1. Download and install putty (putty-0.62-installer.exe)

<http://www.chiark.greenend.org.uk/~sgtatham/putty/download.html>

2. Define a tunnel:
(follow these instructions)

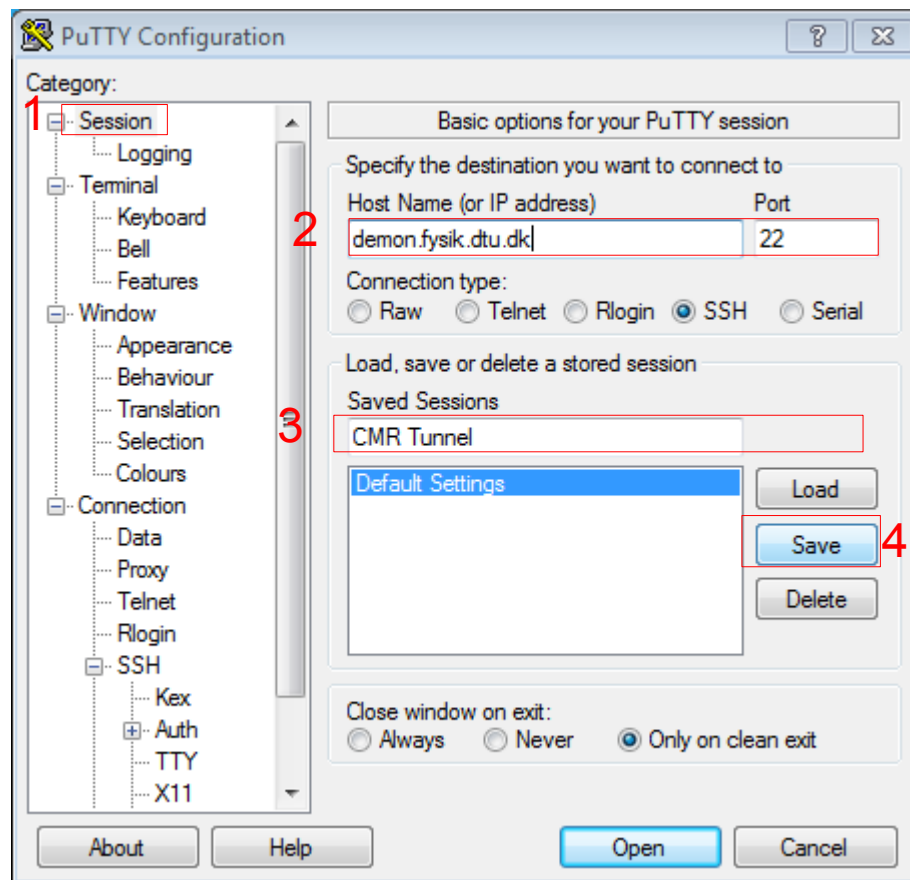


Accessing the internal database

Windows:

3. Store connection parameter

(After the connection parameters are stored. The next time you only have to perform step 4 and 5.



Accessing the internal database

Windows:

4. Load the connection parameters and connect

5. Open <http://localhost:8080> in your favorite web browser

