

FTPRACER 99

USER REFERENCE

REV.1.3

DATE : 01/15/2000

(c)FtpRacer99 Team , All Rights Reserved

TOPIC : mutil ftp mirroring and dumping engine

The key features that makes Ftpracer distinct is the multi ftp mirroring and dumping engine , it enables Ftpracer to mirror or dump with up to 9 different ftp sites at the same time , all ftp mirroring threads not only have their own dupe file database (depending on their local\_scan\_dir) , but also share a global dupe file database ( can be disabled ) , that makes Ftpracer to download no dupe file at all . here are some features that may only be found on Ftpracer .

It can mirror from different ftp sites at the same time , without downloading dupe files , even files are located in different directories names on different ftp sites , no empty directories will be made on local directory also . it can dump to remote ftp site without uploading files that the remote ftp sites already have , even the file is located in different directory name in local and remote directory , it is achieved by scanning remote directories and files before dumping , no empty directories will be made on remote ftp sites also .

it can sync with remote ftp site , a dump will be performed automatically after a mirror .

it supports 3 mirroring or dumping modes , including filename , date/time , file size comparision modes .

note 1: 'mirror' means download all files and directories from ftp sites as they were stored in ftp sites

note 2: 'dump' means upload all files and directories from local disk to remote ftp sites as they were stored in local disks

Limitation of Ftpracer :

Ftpracer is able to transfer with at most 9 ftp sites at the same time  
Ftpracer will traverse into remote ftp folders at most for 10 levels when mirroring remote folders to local disk

Ftpracer will traverse into local folder for unlimited levels and upload them to remote ftp sites when dumping

Ftpracer's default timeout value for connection , file transfer is 45 seconds , you can not change it

When using mode 3 mirroring , the local file date and time is set to the same time as the remote file date and time , how ever , the 'second' is ignored due to ftp server limitations

When using mode 3 dumping , the uploaded file will not have the date/time that original local file has , it will have the new write time as its date/time . However , FtpRacer 99 provides an option to set local file time as the new remote file time after a mode 3 dumping.

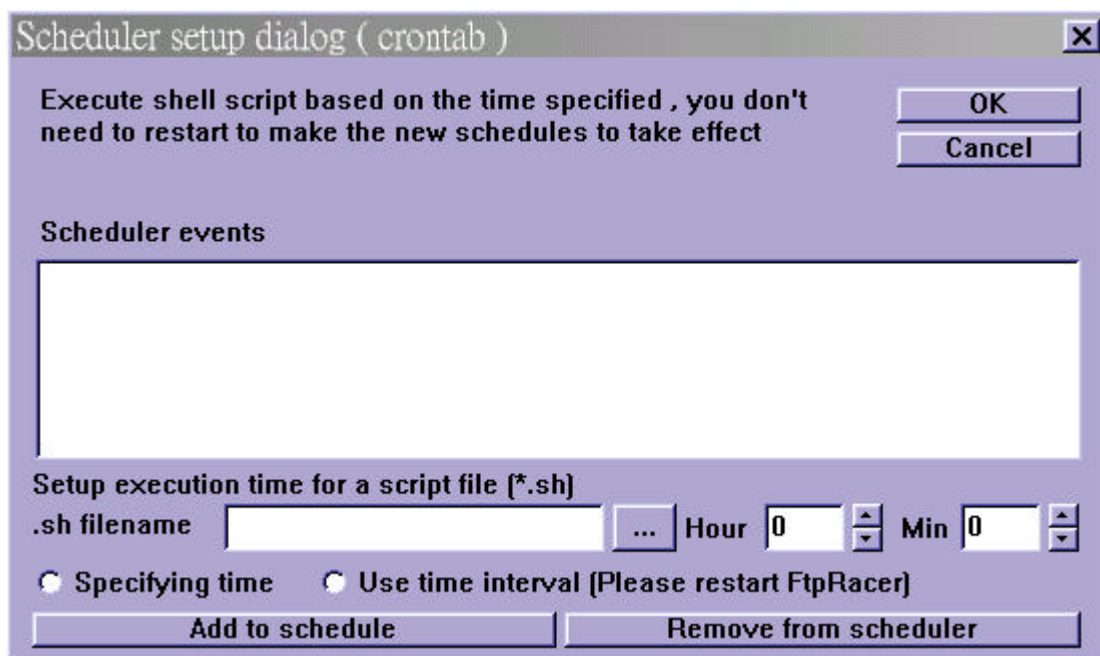
#### TOPIC : SCHEDULER FOR FTPRACER

To explain about the scheduler for Ftpcracer , we first ask ourself this question .

Q: Why do we need a scheduler in the Ftpcracer ?

A: For a mirroring application , we often need to specify at what time Ftpcracer shall transfer files with which site , because that the Ftpcracer can do at most 9 mirrorings or dumpings at the same time , so we surely want a scheduler to invoke mirror or dump at the right time for us .

You can change scheduler settings in the menu->configure scheduler



To be able to start to use Ftpcracer scheduler , you need to prepare 2 things first , one is to understand some Ftpcracer shell commands , the second thing

is to use any external text editor to edit a \*.sh file . We will show an example from here .

Example :

Operation goal 1 : mirror from site A (profile is saved in a.site already)  
at 03:55 everyday

Operation goal 2 : dupe to site A (profile is saved in a.site already) at  
04:00 everyday

Operation goal 3 : sync with site A (profile is saved in a.site already)  
at 05:00 everyday

Solution :

Use notepad.exe to edit a text file and save it as 35.sh , the content of  
it is simply

```
LOAD a.site  
new mirror
```

Use notepad.exe to edit a text file and save it as 04.sh , the content of  
it is simply

```
LOAD a.site  
new dump
```

Use notepad.exe to edit a text file and save it as 05.sh , the content of  
it is simply

```
LOAD a.site  
new sync
```

Be sure to save \*.sh files under Ftpracer program directory , and then browse  
for 35.sh by clicking the '...' button , and then change the 'hour' and  
'min' to the time you want Ftpracer to execute the script , in this case  
the hour should be set to add it to 03 and the min should be set to 55 ,  
finally click add to scheduler , repeat the same steps to add the rest 2  
\*.sh files to the scheduler . After you add these \*.sh to scheduler and

specify a time for them , the Ftpracer will execute the \*.sh file at right time , hence the Ftp racer will meet the 3 goals we require here .

note 1: \*.sh files are regarded as Ftpracer shell script files

note 2: \*.site are regarded as Ftpracer site profile files (generated automatically when you do menu->file->save)

note 3: 'LOAD a.site' 'new mirror' 'new dump' 'new sync' , are shell commands of Ftpracer , where a.site is site profile , the complete reference of Ftpracer shell commands can be seen here .

In the FtpRacer v1.2 and above , there is a new scheduling mode , you can not only specify an event at certain time now , you can also specify a time interval , for example , 10 minutes , and this event will be executed every 10 minutes .

#### TOPIC : SKIP DUPE FILE SETTINGS

The Ftpracer has a built in dupe checker (filename only) , it is used to stay away from downloading or uploading the files that the your site or other site already have (or don't want!) . You can disable it when you don't want to use this feature , or enable it and configure it

You can change this option in the menu->option dialog

**Files and directories option**  
 Skip dupe file    **Configure**

**shell daemon configuration**  
Daemon port        **Stop daemon**    Daemon is running

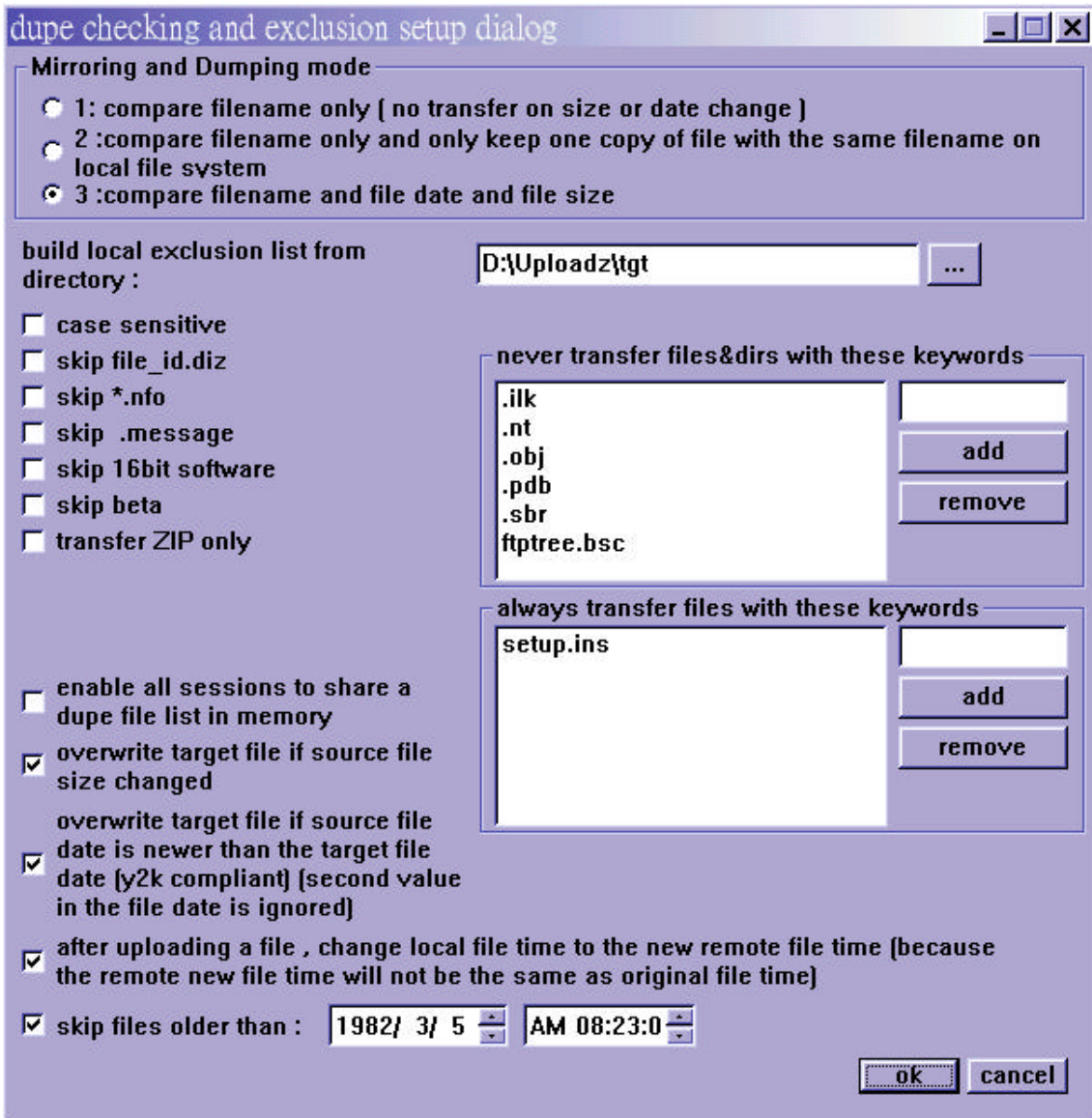
**Zip checking option**  
Q: What to do if a bad zip file is downloaded ?  
 Do nothing     Rename it to \*.bad.zip     Delete it  
Add this tag to every zip transfered by me  
tag :        **Apply**  
 Add \*.nfo files in to every zip transfered by me

**Ftp connection option**  
 Preconfigured ( same as IE )  
 Direct connection  
 Through Proxy ( CERN proxy , configured in IE)

**Network quality assurance system ( In / Out bytes credits system )**  
 Enable In / Out credits system  
Available In-byte credit :        kb    **Apply**  
Available Out-byte credit :        kb    **Apply**

**OK**    **Cancel**

When you decide to enable skip dupe file , you simply need to check the check box , and click configure button , and then this dialog will appear .



Build local files exclusion list from : specify (you can use the browse button) a local directory where you want the Ftpracer to scan (scan all files under that directory , and build a dupe file database) everytime it mirrors

\* Please note that this path is only used in mirroring/dumping mode 1 , and not used in mode 2 and 3 .

Skip file\_id.diz : if you have this check box checked , the Ftpracer will not download file\_id.diz files from remote ftp sites

Skip \*.nfo : if you have this check box checked , the Ftpracer will not download \*.nfo files (mostly advertisement text files) from remote ftp sites

Skip .message : if you have this check box checked , the Ftpracer will not download .message (mostly information files generated by some ftp daemons) files from remote ftp sites

Skip 16 bit stuff : if you have this check box checked , the Ftpracer will not download 16bit operating systems programs from remote ftp sites , 16 bit operatings system are DOS , Windows 3.x

Skip beta : if you have this check box checked , the Ftpracer will not download will not download directories with beta or release candidate keywords from remote ftp sites

Skip non zip : if you have this check box checked , the Ftpracer will only download \*.zip files from remote ftp sites , most sharewares are compressed in the zip format in the internet sites

Case sensitive : when comparing file names or directories with skipping rules , you can force FtpRacer to do case sensitive checking or not .

enable all sessions to share a dupe file list in memory : this is only meaningful in mirroring/dumping mode 1 and 2 , when mirroring or uploading , all threads will share a dupe file database , so they will not upload or download the same file while it was transferred by another thread already . ( comparing filename only )

overwrite target file if source file size changed : this is only meaningful in mirroring/dumping mode 3 , for mirroring , the target file is local file and the source file is remote file . and for dumping , the source file is local file and the target file is remote file . The special characteristics of Ftp servers should be noted . When downloading a file , the local file date and time is tagged as the same time with the remote source file , but when uploading a file , the remote new file time is the remote file new write time (not the source file time on the local side) , however , the FtpRacer can changed the local file time to the same one with the new remote file write time if specified .

overwrite target file if source file date is newer than the target file date (y2k compliant) (second value in the file date is ignored) : overwrite target file if source file's size changed , even the target file already existed in target file system .

after uploading a file , change local file time to the new remote file time (because the remote new file time will not be the same as original file time) : when the FtpRacer performs a dump , it can not change the file's



last write on ftp servers , hence the newly uploaded will not have the same file time as the original local file , so we provide this option to change local file time as the remote new file time after a dump .

skip files older than : this option is globally effective , when a file is older than the date specified , FtpRacer will not transfer it , however , due to Microsoft libraries' limitations and ftp servers limitations , we don't suggest you to set the time out of the range 1970-2039 year .

Note that Ftpracer cannot only skip dupe files while downloading or uploading , but also can also skip unwanted files and directories , most ftp sites store their files by tree structure with directory names and filenames , the Ftpracer will automatically look at the directory names and will not download the whole sub directory if you check the skip something check box . for example , there is a directory called Ftpracer.1.0.Beta2 , the Ftpracer will not download the whole directory of Ftpracer.1.0.Beta2 if you have skip beta files checked . If there is a directory called Ftpracer.1.0.For.Windows.3.1 , it will also not be downloaded if you have skip 16 bit stuff . We already build some logics in the Ftpracer to process the default skip something options , If you would like to skip more directories , you can enter a keyword and click the Add button .

These settings are actually kept in \*.site files and ftpracer.include and ftpracer.exclude in the ftpracer program directory , you can also edit them by any text editor (ex: notepad.exe) easily

#### TOPIC : ZIP FILE CHECKER SETTINGS

The Ftpracer has a built in zip checker , it is used to verify zip integrity of files downloaded by Ftpracer , there are some options you can change , simply change those values in the option dialog

You can change this option in the menu->option dialog

Files and directories option

Skip dupe file   

shell daemon configuration

Daemon port            Daemon is running

Zip checking option

Q: What to do if a bad zip file is downloaded ?

Do nothing     Rename it to \*.bad.zip     Delete it

Add this tag to every zip transfered by me

tag :       

Add \*.nfo files in to every zip transfered by me

Ftp connection option

Preconfigured ( same as IE )

Direct connection

Through Proxy ( CERN proxy , configured in IE)

Network quality assurance system ( In / Out bytes credits system )

Enable In / Out credits system

Available In-byte credit :        kb   

Available Out-byte credit :        kb   

You can do something else on zip files downloaded by Ftpracer , simply change them in the option dialog

You can change this option in the menu->option dialog

Note that \*.nfo files are mostly advertisement files , you can edit some of them by any text editor , and place them into Ftpracer program directory , the Ftpracer will automatically add \*.nfo to every zip file transfered by it , if you have this check box checked.

TOPIC : NETWORK QUALITY ASSURANCE SYSTEM

The Ftpcracer's network quality assurance system enables network administrators to limit the bandwidth usage of mirroring or dumping processes , you can reset currently available in / out byte credits in the the menu->option

The screenshot shows a configuration dialog box with the following sections:

- Files and directories option**:  Skip dupe file,
- shell daemon configuration**: Daemon port: 2048,  Daemon is running
- Zip checking option**: Q: What to do if a bad zip file is downloaded ?  
 Do nothing     Rename it to \*.bad.zip     Delete it  
Add this tag to every zip transferred by me  
tag : FREE DEMO CANT CHANGE THIS   
 Add \*.nfo files in to every zip transferred by me
- Ftp connection option**:  
 Preconfigured ( same as IE )  
 Direct connection  
 Through Proxy ( CERN proxy , configured in IE)
- Network quality assurance system ( In / Out bytes credits system )**:  
 Enable In / Out credits system  
Available In-byte credit : 0 kb   
Available Out-byte credit : 0 kb

Buttons at the bottom:

dialog .

To make this feature more flexible , the network quality assurance system can be incorporated with the Ftpcracer scheduler and shell commands . The user can add a quantity of credits for in or out byte credits , the following content can be edited and saved into addcred.sh , and you can add this addcred.sh to the scheduler events .

SAMPLE CONTENT IN ADDCRED.SH

```
addcredin 500000
```

```
addcredout 500000
```

THE ABOVE 2 COMMAND LINES WILL ADD 500 MEGABYTES OF CREDITS TO BOTH INCOMMING AND OUTGOING TRAFFIC .

#### TOPIC : FTPRACER UTILITIES

Ftpracer provides some useful utilities to help owner of Ftpracer to manage their ftp collections.

The Ftpracer has some zip utilities , it can verify all zip files recursively and find out bad zip file and move them into another folder for you automatically . It has another experimental utility that can analysis file\_id.diz in shareware zip files , and try to find out the application name of this shareware and then move the shareware zip files to the correct folder , this feature is not guaranteed to work correctly but in our own tests it does work pretty fine .

You can use these 2 utilities by clicking menu->utilities  
verify all zip files under a specified directory (recursively)  
sort all zip files under a directory , and put them to where they should be (not guaranteed to work correctly)

You can also see other 3 utilities provided by Ftpracer , they are  
  
check disk usage under a specified directory (available as 'du' in Ftpracer shell command)  
clear empty directories under a specified directory (available as 'CLEAREMPTY' in Ftpracer shell command)  
clear dupe files under a specified directory (available as 'CLEARDUPE' in Ftpracer shell command)

#### TOPIC : TERMINAL SERVER FOR REMOTE CONTROL

Ftpracer has a built in terminal server , it has the following features  
It allows at most 7 users to use CRT or Unix shell to telnet to it at the same time

It has complete user management and security facilities

It has many available Unix C shell style commands , see also for complete reference

The shell commands cover commands for the following usages system information  
mirror / dump threads control  
file / directory manipulation  
zip files manipulation  
tcp routing service control

Here are something you surely want to know now , so we will tell you the answer directly now

Q: How can I setup and start the Ftpracer terminal server ?

A: Once you start the ftpracer.exe , the terminal server should be started also , it would be running on the daemon\_port (see also) , if it is the first time you run the ftpracer.exe , you may want to set the port to your favorite port and restart the shell daemon .

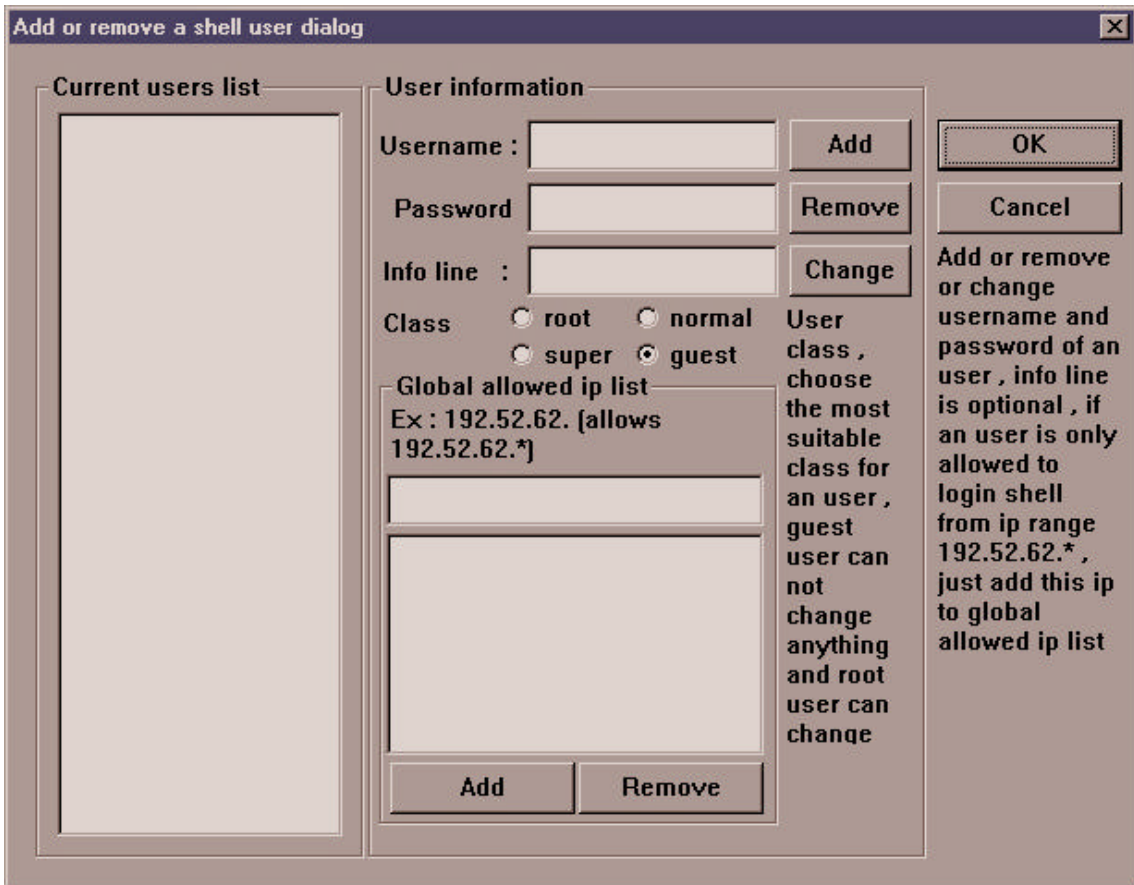
Q: How can I connect and login the Ftpracer terminal server ?

A: You can use the terminal emulation client 'CRT' or simply use unix shell to telnet to the Ftpracer ip address on the daemon\_port you set earlier . If you connect to it successfully , you will need to enter your username and password in order to login the shell , see this for more information about adding a new shell user .

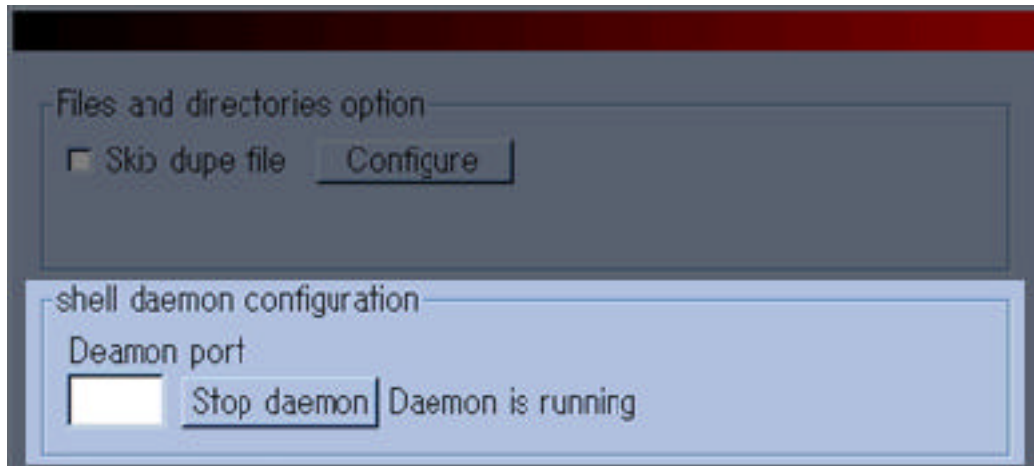
TOPIC : FTPRACER SHELL COMMANDS REFERENCE

Ftpracer shell commands can be entered in Ftpracer shell , or written in \*.sh files (commands can be used in \*.sh files are subset of all Ftpracer shell commands) , in the first case , you need to login Ftpracer terminal server before you can enter any shell command , to login a Ftpracer terminal server , you need to have a valid shell account , an account can be added in this dialog

You can add your own shell account and password in the menu->system->add or remove shell user dialog



After you create yourself an account , you can login Ftpracer terminal server by telnet to the ip of Ftpracer at the daemon port , the daemon port of Ftpracer terminal server can be set here : goto menu->option->general option



Supposing that the shell daemon (Ftpracer terminal server) is started on port 911 and Ftpracer is running on localhost (ip:127.0.0.1) , now we can try to login it by using terminal emulation client such as 'CRT' or we can even login from an unix shell . Because the Ftpracer terminal server is not really telnet compliant , you can only use CRT or unix shell to login it at this moment . When you connect to 127.0.0.1 port 911 , you will be prompted for username and password , just enter the username and password you just added for yourself and you can login .

note 1: If not even 1 ip is added to 'global allowed ip list' , ip checking is disabled , if ip checking is enabled , no one can even connect to your Ftpracer terminal server unless his ip is added to the allowed ip list , of course he has to enter a valid username and password if he wants to login .

note 2: There are 4 classes for a shell account . root can execute all shell commands and guest can not execute anything . in the commands reference chart we will have the user class allowed to execute this command in the chart .

Normal shell commands

COMMAND SYNTAX	DESCRIPTION	CLASS
SET R_PORT = PORT	set remote ftp site's port to PORT	R,S,N
SET DAEMON_PORT = PORT(1-65535)	set terminal server's port (can't change dynamically)	R,S,N
SET LOCAL_DIR = VALID_PATH	set local dir to VALID_PATH (ex: c:\temp)	R,S,N
SET REMOTE_DIR = VALID_PATH	set remote dir to VALID_PATH (ex: /pub)	R,S,N
SET REMOTE_IP = VALID_IP or VALID_DOMAIN	set remote ftp site's ip or domain name	R,S,N
SET USER = USERNAME ON FTP SITE	set username to USERNAME on ftp site	R,S,N
SET PASS = PASSWORD ON FTP SITE	set password to PASSWORD on ftp site	R,S,N
SET TELNET_DEBUG = TRUE or FALSE	set to true if you want to see more detailed msgs	R,S,N
SET SKIP_DUPE = 0(DONT SKIP) or 1(SKIP)	set skip dupe files flag to true or false	R,S,N
SET PAUSE = TRUE OR FALSE	set to true to pause the scheduler	R,S,N
SET L_SCAN_DIR = PATH	set to local scan directory	R,S,N
SET SKIP16BIT = 0(DONT SKIP) or 1(SKIP)	set to 1 if you want to skip 16 bit stuff	R,S,N
SET SKIPBETA = 0(DONT SKIP) or 1(SKIP)	set to 1 if you want to skip beta stuff	R,S,N
SET HIDE = 0	Ftpracer window appearance flag , 0 = normal , 1 = hide with tray icon , 2 = hide completely , after your change this flag you need to execute 'saveini' and restart Ftpracer or execute a 'loadini'	R,S
Loadini	load settings from Ftpracer.ini	R,S
Saveini	save settings that should be saved into Ftpracer.ini into Ftpracer.ini	R,S
SET SKIPNONZIP = 0(DONT SKIP) or 1(SKIP)	set to 1 if you don't want to download or upload non zip files	R,S,N
CLEARDYNDB	Clear dynamic dupe-db , this database is shared by all mirroring threads , so thread-1 will know what files are downloaded by thread-2 dynamically , you can empty this database by executing	R,S



	CLEARDYNDB	
new mirror	Execute mirror right away , up to 9 connections , required resources will be allocated and freed automatically	R,S,N,SH
new dump	Execute dump right away , up to 9 connections , required resources will be allocated and freed automatically	R,S,N,SH
new sync	Execute sync site right away , up to 9 connections , required resources will be allocated and freed automatically	R,S,N,SH
Ps	Show all current ftp threads information	R,S,N
exec executable_filename	execute *.exe file	R,S
PS	Show child process handle (if you start any)	R,S
kill n	Kill ftp thread n softly , where n = 1-9	R,S,N
KILL n	Kill ftp thread n (immediatelly) , where n = 1-9	R,S,N
who	show who is online (Ftpracer terminal server)	R,S,N
write n msg_body	n = tty# (0-6) , send msg to ttyn (0 for GUI)	R,S,N
wall msg	send msg to all online users (Ftpacer terminal server)	R,S,N
LOAD filename	Load settings from filename (*.site)	R,S,N,SH
SAVE filename	Save settings to filename (*.site)	R,S,N,SH
exit	this will disconnect you from the terminal server	R,S,N,G
info	this will display current basic site info (ex:ip port)	R,S,N,G
addcredin num_of_kb	thiswilladdnum_of_kbkbytes to credit for in traffic	R,S,SH
addcredout num_of_kb	thiswilladdnum_of_kbkbytes to credit for out traffic	R,S,SH
help	this will display help for all commands	R,S,N,G
setenv	thiswilldisplayenvironmentvariables	R,S,N,G

Note 1 : in the class cell , R=ROOT S=SUPER USER N=NORMAL USER G=GUEST USER  
SH=Allowed to be exeuted by \*.sh

#### File management shell commands

cat FILENAME	display the content of a text file called FILENAME	R,S
Cp FILENAME DIRNAME	copy FILENAME TO DIRNAME	R,S
Cp FILENAME1 FILENAME2	copy FILENAME1 TO FILENAME2	R,S

Cd DIRNAME	change to another directory , .. means parent directory	R,S
Cp FILENAME DIRNAME	copy FILENAME TO DIRNAME	R,S
Cp FILENAME1 FILENAME2	copy FILENAME1 TO FILENAME2	R,S
Df	display all harddisk space in the system	R,S
Du	display disk usage under Local Directory	R,S
Ls	list files in the current directory	R,S
mv FILENAME1 FILENAME2	move (rename) FILENAME1 TO FILENAME2	R,S
mv DIRNAME1 DIRNAME2	move (rename) DIRNAME1 TO DIRNAME2	R,S
mkdir DIR_NAME	create a directory called DIR_NAME under current directory	R,S
pwd	display dirname of current directory	R,S
Rm -r DIRNAME	delete a sub-directory	R,S
Rm FILENAME	delete a file FILENAME , wildcard can be used	R,S

Note 2 : All classes of users can only move around in these 2 directories , #1 Ftpracer program directory , #2 Local Directory , there is no need to worry about unauthorized accesses to the other contents in the harddisks from Ftpracer shell users .

#### Shell user management shell commands

iplist allow	list all allowed ip	R,S
iplist add IP	add new IP to allowed ip list	R
iplist del IP	del an IP from allowed ip list	R
userlist list	list all shell users (without password visible)	R,S
userlist deluser USERNAME	delete a shell user	R
userlist adduser	add a shell user ,but fill 'userstructure' first	R
info userstructure	display to be added user info	R,S
SET UNFOUSER = USERNAME	set to be added user's USERNAME	R
SET UNFOPASS = PASSWORD	set to be added user's PASSWORD	R
SET UNFOCLASS = NUM	NUM = (root=0,super=1,normal=2,guest=3) , set to be added user's class	R
SET UNFOINFO = information line	set to be added user's info line (description only)	R

Zip command line and other utilities (zip related features are not available in demo version)

target.zip src1 src2 ..	create target.zip and add src1 src2 into it , src can contain wildcard	R,S
unzip target.zip fname1 fname2 ..	extract fname1 fname2 .. from target.zip , fname can contain wildcard	R,S
CLEARDUPE FULL_VALID_PATH	clear all dupe files under FULL_VALID_PATH (ex c:¥temp) , it can work recursively	R,S
CLEAREMPTY FULL_VALID_PATH	clear empty directories under FULL_VALID_PATH , it works non-recursively	R,S

Note 3 : Only root and super users can execute these commands around and under these 2 directories , #1 Ftpracer program directory , #2 Local Directory , there is no need to worry about unauthorized accesses to the other contents in the harddisks from Ftpracer shell users .

Tcp / udp routing service commands

udprdstart localport remote_ip remote_port	See next section	R,S,SH
tcprdstart localport remote_ip remote_port	See next section	R,S,SH
rdlist	See next section	R,S
tcprdddelete id_num	See next section	R,S

Topic : dynamic tcp / udp routing service in the ftpracer

Tcp packet routing (redirection) is essential features of most of the popular proxy server or firewalls , the ftpracer also provides this functionality . With the built in shell daemon of ftpracer , users of ftpracer can start , stop or query status of tcp routing daemon dynamically , with very simple shell commands . We will dicuss about 4 available commands in the next sectionfor managing the tcp routing daemon .

Why use tcp routing ?

Choose your own fast routes , bypassing the default hardware internet routes . This can be useful when your default routers don't route some kind of packets for you .

Accessing other internet servers from the internet address (ip) of ftpracer , this can be useful when other internet servers perform ip checkings .

Why do we build this service in the Ftpracer ?

Instead of making command line mode ftp client in the ftpracer shell , we include this feature in the ftpracer , with this service , owner of ftpracer can browse ftp sites from ftpracer's IP address , to pass the IP checking that may be performed by the ftp servers that ftpracer will mirror from or dump to .

Special features of the tcp routing daemon of ftpracer

Supporting all one tcp connection only internet applications .

Supporting both ftp-command and ftp-data tcp connections (not included in free demo version) , ftp clients can work with tcp routing daemon of ftpracer

directly without any modification or firewall supports .

Start / stop routings dynamically without limitation . Simply by few commands of the ftpracer shell daemon .

start a new routing

syntax : tcprdstart localport remote\_ip remote\_port

syntax : udprdstart localport remote\_ip remote\_port

example : tcprdstart 1080 www.microsoft.com 80

after you type this command in the ftpracer shell , you can use your web browser to connect to the address of the ftpracer (ex:127.0.0.1) at port 1080 , like this <http://127.0.0.1:1080> , and then your request will be routed to [www.microsoft.com:80](http://www.microsoft.com:80) , and all the responses from [www.microsoft.com:80](http://www.microsoft.com:80) will be sent to the mirromen ftpracer , and ftp racer will route all packets back to your web-browser .

list all running routings on the ftpracer

syntax : rdlist

example : rdlist

(responses from shell)

```
ftpracer:>%rdlist
```

```
id:08383100 listens on 1080 , target is 127.0.0.1:911
```

```
id:08387972 listens on 1082 , target is 127.0.0.1:913
```

```
id:08385536 listens on 1081 , target is 127.0.0.1:912
```

```
ftpracer:>%
```

If you already started some tcp routings , then you can use this command to see what routings on running on the system , note that the id is the object id of the tcp routing thread , you can stop the routing service by deleting this object id , and that can be done by the command we will introduce in the next section .

delete a running routing on the ftpracer

syntax : tcprddelete id\_num

example : tcprddelete 08383100

```
ftpracer:>%rdlist
```

```
id:08383100 listens on 1080 , target is 127.0.0.1:911
```

id:08387972 listens on 1082 , target is 127.0.0.1:913

id:08385536 listens on 1081 , target is 127.0.0.1:912

```
ftpracer:>%tcprdddelete 08385536
```

deleted routing-d object 007ff400 (08385536)

```
ftpracer:>
```

If you want to delete (stop) a running tcp routing , just execute this command in the ftpracer shell , and the routing will be stopped .

Enable or disable tcp routing service of ftpracer :

If you don't want to enable the tcp routing service , edit ftpracer.ini by a text editor , ex: notepad.exe , change from

```
[TURD]
```

```
trd=1
```

```
to
```

```
[TURD]
```

```
trd=0
```

If trd is set to 1 , the tcp routing service will be available after the ftpracer is started , If it is set to 0 , this service will not be available .

If you don't want to enable the udp routing service , also modify these in the ftpracer.ini

```
[TURD]
```

```
urd=1
```

```
to
```

```
[TURD]
```

```
urd=0
```

TOPIC : REPORTING ON IRC VIA AN EGGDROP BOT

Ftpracer is not only capable of reporting events via telnet session , but also capable of reporting on IRC(Internet Relay Chat) channel , to report on an IRC channel , you need an EGGDROP bot , because that Ftpracer can not connect to an IRC server directly , it needs to connect to an EGGDROP bot and use it to report events on an IRC channel .

Before you can use this handy feature , you need to setup an EGGDROP bot , if you don't know how to setup it , please read the EGGDROP documents . After you have an EGGDROP bot set , you may need to edit its config file and make sure it has this line added "listen all xxxx" where xxxx is a port number that the EGGDROP will be listening on . If there is no such line in your EGGDROP config file , you need to add this line to it and restart your EGGDROP bot .

After you have an EGGDROP bot hanging on IRC , you need to add an user to the bot , and set a password for this account . so the Ftpracer can user this username / password to connect to the EGGDROP bot later on .

If the above things are all set , you can start to setup the bot connection options , goto menu->System->Report on irc , and fillup the following edit

In order to report on IRC you need to connect to an eggdrop

Event reporting setup

VAR#1      EVENT MSG VAR#2

VAR#1 : [HELLO]

VAR#2 : [I M FTPRACER]

Command for bot to use : :say      Send

Ip , port , username , password of your eggdrop bot

Ip [xxx.xxx.com]      Port [6667]      Connect

User [someone]      Pass [somestring]      Not connected

Save      Cancel

boxes with correct values .

Ip : fill the ip of the server where the EGGDROP is running on

Port : fill the value xxxx in "listen all xxxx" , that is a port number

User : user name for logging in the EGGDROP bot

Pass : password for the account on the EGGDROP bot

Var#1 : prefix value for reporting events

Var#2 : surfix value for reporting events

Special note : currently the Ftpracer will only report for new directories names and bad zip files requests in the IRC channel

#### E-Mail Notification

Ftpracer can sendout notification email about current system status , and important system log , to use this feature , you need to to edit a text file calledreport.sh , which contains only one line of ftpracer shell command , that is report , add just add this report.sh to the scheduler . and then you will get the notification email on the time you specified everyday . before you can use this feature , you also need to setup email address , smtp address , etc in menu->system->email notification .



Email reporting service setup

email notification for events

send mail to

smtp server

from

subject

**Save** Cancel Test

**hint**  
to send out a report at specific time of a day , edit a email.sh with the command 'report' in it . and add it to the scheduler at the time you wish to receive the report , you can set it to report as many times as you want in a day