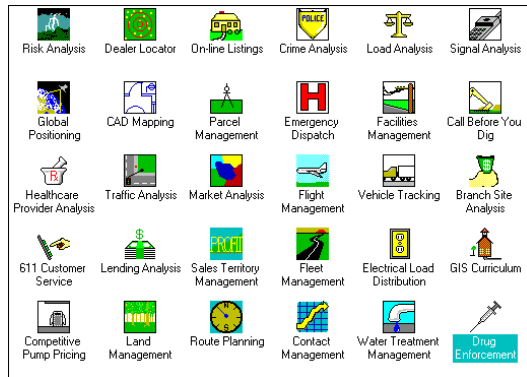


MapBasic® v5.0

Application development environment for MapInfo Professional



MapBasic® is an ideal programming language to create custom MapInfo® applications, extend the functionality of MapInfo Professional, automate repetitive operations, or integrate MapInfo Professional with other applications. MapBasic contains powerful statements that enable you to add maps and geographic functionality to your applications with only a few lines of code. MapBasic programs are easy to integrate with applications written with such other programming languages as Visual Basic®, C++, PowerBuilder® and Delphi. MapBasic is a proven language with hundreds of third-party applications on the market.

- **Powerful BASIC-like language for creating custom applications for MapInfo Professional.**
- **Supports OLE and DDE for easy connectivity to other applications.**
- **Contains embedded SQL for powerful data querying.**
- **Geographic operators and functions help extend applications functionality.**

MapBasic is a robust, structured BASIC-like language that enables both experienced and novice programmers to create powerful new desktop mapping applications. Whether you are creating applications for resale or designing applications for use within your own organization, MapBasic is an indispensable tool.

Build Custom User Interfaces

As desktop mapping applications have become more widespread in organizations, the need to build custom applications becomes greater. Custom programs deliver powerful features in an easy-to-



MapBasic allows you to create custom user interfaces.

Integrate MapInfo

Desktop mapping is most useful when it is integrated with other business tools. MapBasic supports the ODBC database

you can integrate a map window into your Visual Basic application —with only five lines of code.

Extend MapInfo Functionality

Unlike a scripting language, MapBasic is a multi-platform, procedural, event-driven, compilable programming language built around MapInfo. This architecture allows you to create additional features. For example, you can add sophisticated models for planning cellular antenna locations. MapBasic has powerful built-in geographic statements and functions. A subset of the full ANSI structured query language

Easy to Learn

Built on BASIC, MapBasic has familiar functions and statements. MapInfo Professional® has a special window which lets you see MapBasic commands being generated as you use MapInfo's menus and you can try out your own commands. This way you can learn MapBasic commands and even cut and paste them into your application.

Development Environment

MapBasic is a compiled language. The compiled programs you create are run inside MapInfo Professional or special MapInfo runtimes.

The development environment provides a text editor that you can use to write programs. If you already have a favorite text editor, you can use that editor instead.

MapBasic has facilities to handle significant programming efforts. It supports project files which allows you to compile and link separate modules.

Statements and Functions

MapBasic contains over 300 statements and functions including:

Flow control: looping, branching sub-procedures, user-defined functions, event handlers, error handling.

Connectivity: Call routines from DLLs. Communicate with other applications using DDE. Control MapInfo using DDE or OLE

Automation. Access remote data sources through ODBC.

User Interface: Create new menu bars, menus or menu items, remove items from existing menus. Create or modify buttons on tool bars. Create custom dialogue boxes with text boxes, drop down lists, buttons, checkboxes, radio buttons, style pickers, select boxes. Show or hide standard windows, control events on selection, map window changes, window closure, window focus change, button push, or application termination.

Report	
Daily Logs	Ctrl+D
Monthly Report	Ctrl+M
Quarterly Summary	Ctrl+Q
Customer Map	F2
Office Map	F3
Get Info...	

MapBasic can customize MapInfo menus.

Variables: local, global, numeric, string, logical, dates, and object variable types, arrays, custom data structures.

Table and File Manipulation: Use Excel, Lotus® 1-2-3®, xBASE and ASCII files directly. Built-in SQL commands to query, sort, aggregate, join, and create derived data. (Supports select statements with FROM, WHERE, ORDER BY, GROUP BY clauses with sub-selects). Supports equi-joins and geographic joins. Commit changes, roll-back changes. Connect to data via ODBC. Open, close, read, write to ASCII and binary files.

Functions: String, data conversion, math, date, time, and geographic functions.

Geographic object manipulation: create points, lines, polylines, text, polygons, buffers, etc. Edit and manipulate objects including reshape, object conversions, split, combine, erase. Calculate area, perimeter, length, centroid, area overlap. Modify object styles. Display maps from multiple layers, control display settings, create thematic maps. Find and geocode objects. Supports multiple coordinate systems.

MapBasic Requirements

Requires MapInfo Professional®. MapBasic® is available for: Windows 3.1, Windows® 95 and 98 and Windows NT® 4.0.

For More Information:

Call a MapInfo sales representative at: 1.800.327.8627, or visit <http://www.mapinfo.com>.

© 1999 MapInfo Corporation. All rights reserved. MapInfo, MapInfo Professional, MapBasic and the MapInfo logo are registered trademark of MapInfo Corporation in the United States. All other marks, trademarks and registered trademarks are the property of their respective holders.