



MapInfo Professional

Version 10

INSTALL GUIDE

Information in this document is subject to change without notice and does not represent a commitment on the part of the vendor or its representatives. No part of this document may be reproduced or transmitted in any form or by any means, electronic or mechanical, including photocopying, without the written permission of Pitney Bowes Software Inc., One Global View, Troy, New York 12180-8399.

© 2009 Pitney Bowes Software Inc. All rights reserved. Pitney Bowes Business Insight, MapInfo, Group 1 Software and MapInfo Professional are trademarks of Pitney Bowes Business Insight, a division of Pitney Bowes Software and/or its affiliates.

Americas:

Phone: (518) 285-6000

Fax: (518) 285-6070

Sales: (800) 327-8627

Government Sales: (800) 619-2333

Technical Support: (518) 285-7283

Technical Support Fax: (518) 285-6080

www.mapinfo.com

UK and EMEA:

Phone: +44(0) 1753 848200

Fax: +44(0) 1753 621140

Technical Support: +44(0) 1634 880141

www.mapinfo.co.uk

Asia Pacific:

Phone: 61. 2.9437.6255

Fax: 61.2.9439. 1773

Technical Support: 1800 648 899

www.mapinfo.com.au

Contact information for all Pitney Bowes Business Insight offices is located at: <http://www.mapinfo.com/contactus>

Adobe Acrobat® is a registered trademark of Adobe Systems Incorporated in the United States.

libtiff © 1988-1995 Sam Leffler, copyright © Silicon Graphics, Inc.

libgeotiff © 2009 Niles D. Ritter.

Portions © 1999 3D Graphics, Inc. All Rights Reserved.

HIL - Halo Image Library © 1993, Media Cybernetics Inc. Halo Imaging Library is a trademark of Media Cybernetics, Inc.

Portions thereof LEAD Technologies, Inc. © 1991-2003. All Rights Reserved.

Portions © 1993-2009 Ken Martin, Will Schroeder, Bill Lorensen. All Rights Reserved.

ECW by ER Mapper © 1993-2009

VM Grid by Northwood Technologies, Inc., a Marconi Company © 1995-2005.

Portions © 2009 Earth Resource Mapping, Ltd. All Rights Reserved.

MrSID, MrSID Decompressor and the MrSID logo are trademarks of LizardTech, Inc. used under license. Portions of this computer program are copyright © 1995-1998 LizardTech and/or the university of California or are protected by US patent nos. 5,710,835; 5,130,701; or 5,467,110 and are used under license. All rights reserved. MrSID is protected under US and international patent & copyright treaties and foreign patent applications are pending. Unauthorized use or duplication prohibited.

Contains FME® Objects; © 2009 Safe Software, Inc.

Crystal Reports® is proprietary trademark of Crystal Decisions. All Rights Reserved.

Civic England - Public Sector Symbols Copyright © 2009 West London Alliance. The symbols may be used free of charge. For more information on these symbols, including how to obtain them for use in other applications, please visit the West London Alliance Web site at <http://www.westlondonalliance.org/>

© 1984-2009 Tele Atlas. All Rights Reserved. This material is proprietary and the subject of copyright protection and other intellectual property rights owned or licensed to Tele Atlas. The use of this material is subject to the terms of a license agreement. You will be held liable for any unauthorized copying or disclosure of this material.

Products named herein may be trademarks of their respective manufacturers and are hereby recognized. Trademarked names are used editorially, to the benefit of the trademark owner, with no intent to infringe on the trademark.

May 2009

Table of Contents

Before you Install	5
Introduction	6
System Requirements	7
Dependencies and Prerequisites	8
MapInfo Professional Database Connectivity and Support	8
A Note about SQL Server 2008 Support	9
A Note about SQL Server 2005 Support	9
Before You Install MapInfo Professional	9
Navigating the MapInfo Professional CD Browser	10
Citrix Installations	10
Information for IT Specialist or System Administrators	11
Installing MapInfo Professional	13
Installing MapInfo Professional	14
Typical Workstation Installation	16
Custom Workstation Installation	16
Installing Data	18
Getting More Data	18
Installing Related Programs and Resources	19
Installing the ECW Compressor	19
Installing Global Positioning Software (GPS)	19
Troubleshooting your Installation	20
Modifying or Removing MapInfo Professional	20
Removing MapInfo Professional from your System using Control Panel	21
Removing MapInfo Professional from your System using the CD Browser	21
Starting and Activating MapInfo Professional	23
Determine the Type of License you have	24
Node-Locked Licenses	24
Product Activation	24
Finishing Email Activation	28
Using MapInfo Professional While You Wait	29

Transferring a Node-Locked License	31
Concurrent Licenses	33
Connecting to a License Server	34
Borrowing a Concurrent License	36
Returning a Borrowed License	37
Distributable Licenses	37
Activating a Distributable License	37
Transferring a Distributed License	39
Workgroup Installations	43
Understanding the Workgroup Installation Process	44
What are the Application Data Files?	44
Beginning a Workgroup Installation (System Administrators)	44
Completing a Workgroup Installation (MapInfo Professional Users)	47
Understanding your Workgroup Installation	47
Changing the Shared Location after Installation	48
Silent Installation Procedures	49
Silent Installation Procedures for System Administrators	50
Installing Silently on Vista Operating System	51
Activating and Returning Licenses Silently	52
Activating a Node-Locked or Distributed License Silently	52
Returning a License Silently	53
Advanced Configuration Options for System Administrators	55
Controlling Advanced System Settings	56
Descriptions of Advanced Registry Settings	56
Controlling the Location of Application Data Files during Installation	57

Before you Install

MapInfo Professional® is a comprehensive computer mapping tool that enables you to perform complex geographic analysis such as redistricting, accessing your remote data, dragging and dropping map objects into your applications, creating thematic maps that emphasize patterns in your data, and much more.

This document describes how to install MapInfo Professional to your desktop. It also provides more advanced topics that an IT Specialist or System Administrator would follow for installing MapInfo Professional within an organization.

For information about how to work with MapInfo Professional, see the *MapInfo Professional User Guide* after installing MapInfo Professional.

Topics in this Section:

- ◆ **Introduction**6
- ◆ **System Requirements**7
- ◆ **MapInfo Professional Database Connectivity and Support**8
- ◆ **Before You Install MapInfo Professional**9
- ◆ **Citrix Installations**10

Introduction

This document is organized in two parts. The first provides information and instructions necessary for installing MapInfo Professional to a user's desktop. The second, titled **Advanced Topics for System Administrators**, provides information and instructions necessary to IT Specialists or system administrators who must install MapInfo Professional in an organization.

MapInfo Professional Users

To install MapInfo Professional on your desktop:

1. Review the information in this chapter:
 - **System Requirements**,
 - **MapInfo Professional Database Connectivity and Support on page 8**, and
 - **Before You Install MapInfo Professional**.
2. Follow the instructions in **Chapter 2: Installing MapInfo Professional**.

To remove MapInfo Professional from your desktop, see **Modifying or Removing MapInfo Professional on page 20**.

IT Specialists or System Administrators

System administrators installing MapInfo Professional should refer to the chapters in the second part of this document, see **Advanced Topics for System Administrators on page 41**, which contains information for installing a workgroup, performing a silent installation, and advanced configuration options.

System Requirements

Below are the guidelines for minimum and recommended system requirements. Note that hardware requirements do vary based on your use of the product and your system. In general, a higher processor speed, larger memory (RAM) and industry leading graphics cards provide a better user experience and result in better responses from MapInfo Professional. These are the minimum system requirements for MapInfo Professional 10:

Operating Systems	Memory	Disk Space	Graphics	Monitor
Windows Vista Ultimate Windows XP Professional SP 3 Windows XP (64-bit)	256 MB RAM with a 400 MHz Pentium processor (1 GHz Pentium processor recommended)	1.5 gigabytes (GB)	16- or 24-bit Color	800x600 Display
Windows 2008 Server Windows 2003 Enterprise Server SP 1 with Terminal Services/Citrix 4.x	512 MB of RAM with a 400 MHz Pentium processor (1 GHz Pentium processor recommended)	2.9 gigabytes (GB)	16- or 24-bit Color	800x600 Display

* MapInfo Professional is not currently Windows Vista certified.

These are the recommended system requirements for MapInfo Professional 10:

Operating Systems	Memory	Disk Space	Graphics	Monitor
Windows Vista Ultimate Windows XP Professional SP 3 Windows XP (64-bit)	256 or 512 MB RAM with a 400 MHz Pentium processor (1 GHz Pentium processor recommended)	Fast EIDE 2 or SCSI Interface with 2GB or better Data 450 MB	Mid to High 2D/3D card with 128 MB or better	Greater than 1024x768 resolution or better
Windows 2008 Server Windows 2003 Enterprise Server SP 1 with Terminal Services/Citrix 4.x	Same, PLUS memory sufficient to support each connected user	Fast EIDE 2 or SCSI Interface with 2GB or better Data 450 MB	<i>Server:</i> Same <i>Client:</i> Choose based on resolution/speed requirements	Greater than 1024x768 resolution or better

Note For Windows 2003 Server Users: Remember that some of the options you choose for the server can limit the options available to the client system.

MapInfo Professional is tested on the following Microsoft Windows Desktop Operating Systems:

- Windows Vista Ultimate
- Windows XP Professional

- Windows 2008 Server
- Windows 2003 Server
- Windows 2003 with Terminal Services with Citrix Meta Frame technology
- Windows Vista 64-bit with 32 Bit compatibility mode.
- Windows 7 Beta

Note There are no special installation instructions for installing MapInfo Professional on a 64-bit Windows Operating System. Follow the instructions for your installation type, **Typical Workstation Installation on page 16**, or **Custom Workstation Installation on page 16**.

Dependencies and Prerequisites

The MapInfo Professional install wizard checks for the following and prompts you if not already on your system; you can choose to have the install wizard install these requirements, or cancel the installation if you do not want to proceed.

- Microsoft Office Access database engine 2007 – the Access 2007 drivers (ACE)
- Microsoft .NET Framework 3.5 SP1

MapInfo Professional Database Connectivity and Support

MapInfo Professional supports the following spatial database servers:

- SQL Server 2005 with SpatialWare 4.9
- SQL Server 2008 (also called SQL Server Spatial)
- Oracle Spatial 11G, 10Gr2, 9iR2
- PostgreSQL 8.3 with PostGIS 1.3

Further, using ODBC drivers, you can access your data from MapInfo Professional using:

- Oracle ODBC Driver 10.x
- Instant Client version 11.1.0.6
- SQL Server 2005
- SQL Server 2008 Native Client
- PostgreSQL ANSI ODBC driver 8.x

You can also open tables of data from the following databases and make them mappable but only for point data:

- Oracle 9iR2
- Oracle 10Gr2
- Oracle 11G
- Microsoft Access XP
- SQL Server 2005/2008
- PostgreSQL 8.3 with PostGIS 1.3

For more about working with remote database information, see *Accessing Remote Data* and *Setting your Database Connection Preferences* in the *Help System*.

A Note about SQL Server 2008 Support

SQL Server 2008 (SQL Server Spatial) provides a different ODBC driver for Windows Vista.

A Windows Vista user must use the x64 and Itanium versions of sqlncli.msi, which installs the 64-bit and 32-bit versions of SQL Server Native Client, on your 64-bit Windows operating system

To download the appropriate sqlncli.msi, see:

<http://msdn.microsoft.com/en-us/library/ms131321.aspx>

A Note about SQL Server 2005 Support

MapInfo Professional supports the changes in the MS SQL Server 2005 schema concept. Microsoft has enhanced SQL Server 2005 to use schemas to organize database objects into namespaces. In the past the schema was part of the owner/user construct, so when you deleted a user, you deleted the objects associated with that user.

Using SQL Server 2005, objects are associated with a schema, which can be associated with many users and each user can be associated with many schemas.

The old fully qualified name of a database object was:

*Server.Database.**User**.Object.*

The new fully qualified name of the object is:

*Server.Database.**Schema**.Object*

If you leave out the server and database name identifiers, MapInfo Professional uses the current server and database names. If you do not explicitly specify a schema for a user, the server assumes any unqualified object names are in the default schema. Therefore, if you are accessing a SQL Server 2005 database, you need to update any features/functions, tools, and test scripts accessing the objects, including the metadata in the MAPCATALOG, to use the new fully or partially qualified object name.

To make this version of SQL Server work, you must have this 8.5.1 (or later) version of MapInfo Professional. There is a work around for MapInfo Professional 8.5 and earlier versions that accesses a server table with the form, *Database.Owner.Object*. Review the MapInfo Professional 8.5 *User Guide* for these instructions.

Before You Install MapInfo Professional

Before installing MapInfo Professional, record your serial number and access code in an easy-to-remember place. You need a valid serial number and access code to complete an installation or an upgrade. Also, complete the postage-paid registration card and return it to Pitney Bowes Business Insight, or register online by accessing the Contact Info option on the CD Browser.

If the MapInfo Professional installer detects a current version of the product, or detects that the product had been previously installed, then the installer copies the MAPINFOW.WOR, STARTUP.WOR and MAPINFOW.PRF from the operating system's system directory to <user profile root>\Application Data\MapInfo\MapInfo.

Application data (appdata) files are the non-executable data files that MapInfo Professional uses during operation.

Navigating the MapInfo Professional CD Browser

The initial screen of the MapInfo Professional CD Browser includes these options:

- *Install Products*
From this option you can install MapInfo Professional (including DBMS support and translators), free data, and Install Utilities, including: ECW Compressor and GPS.
- *What's New*
Displays a list and description of new and enhanced features.
- *Online Reference*
MapInfo Professional provides links to online reference documents, such as the *MapInfo Professional Install Guide* (this document) and *MapInfo Professional User Guide*, as well as the Adobe Acrobat Reader. These documents are copied into the Documentation subfolder of your installation directory during the installation process.
- *MapInfo Tutorial*
From this option you can access the MapInfo Professional Tutorial from the Pitney Bowes Business Insight web site to learn more about the basic features of the product.
- *Other Products*
Displays information about MapBasic, MapInfo Vertical Mapper, and other products from our website.
- *Contact Information*
Where ever you are, Pitney Bowes Business Insight is there to help you. Contact us at any of these locations or visit us on the world wide web at www.mapinfo.com!
- *Register Online*
To register your product, simply click this entry and the wizard walks you through the registration process quickly.
- *Browse CD*
From this option you can review the contents of the CD. There are additional utilities that may be useful to you that are only available when you browse.
- *Exit*
From this option you can close the CD Browser application.

Citrix Installations

Typically, a Citrix installation is performed by an IT Specialist or a system administrator, but this is not always the case.

There are no special installation instructions for installing MapInfo Professional in a Citrix environment. In addition to the product serial number and access code (supplied on the Product Activation Information Card in the product box), you will also need the MapInfo License Server machine name and port number to activate MapInfo Professional with. Your system administrator will supply this information.

Information for IT Specialist or System Administrators

In addition to MapInfo Professional, you will also have purchased:

- A MapInfo License Server Utility to activate MapInfo Professional with.
Citrix installations require a MapInfo License Server Utility to activate MapInfo Professional. For instructions on how to install and set up a MapInfo License Server for your organization, see the *User Guide* that is provided with the Pitney Bowes Business Insight License Server.
- One or more distributed licenses for MapInfo Professional, depending on the number of MapInfo License Servers you require and the number of users serviced.
For instructions on how to activate a MapInfo Professional installation, see **Distributable Licenses on page 37** in **Chapter 3: Starting and Activating MapInfo Professional**.

Installing MapInfo Professional

This chapter provides instructions for installing MapInfo Professional on your desktop. In addition, there are instructions for fixing problems that come up as part of the installation process and for removing MapInfo Professional from your desktop.

Topics in this Section:

- ◆ **Installing MapInfo Professional14**
- ◆ **Installing Data18**
- ◆ **Installing Related Programs and Resources19**
- ◆ **Troubleshooting your Installation.20**
- ◆ **Modifying or Removing MapInfo Professional20**

Installing MapInfo Professional

CAUTION: We strongly recommend that you exit from all Windows programs before beginning the installation process. If you are upgrading from an earlier version of MapInfo Professional, we recommend that you uninstall before upgrading.

You must have Administrator rights to run the Installer on Windows XP and Vista.

If your Windows **Start** menu does not have a MapInfo program folder, the installation process creates this folder. If your Windows **Start** menu already has a MapInfo program folder, this process creates a new MapInfo icon within that folder.

MapInfo Professional provides its application data files to each user. Called a Per-User install, this functionality runs the first time you run MapInfo Professional or MapInfo Professional client on a machine, and each time the MapInfo Professional Installer is run thereafter. The application data files include, among others, the Pen Styles file, Custom Symbols files, Graph Support files, and Thematic Legend templates. These files allow different users to have custom settings.

Note The Installer requires that your TEMP variable be set to a valid directory.

To install MapInfo Professional:

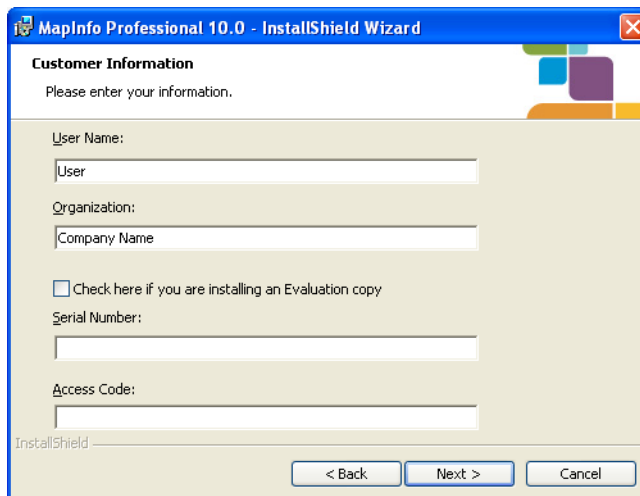
1. On the **Launcher** menu, click **Install Products** from the MapInfo Professional CD Browser.
2. Click **MapInfo Professional Installer**.

If the following is not already installed on your system, then a prompt displays to install it:

- Microsoft Office Access database engine
- Microsoft .NET Framework

Click **Install**.

3. Click **Next** to continue the process and display the License Information screen and accept the terms of the agreement.
4. Click **Next** to continue. The Customer Information screen displays.

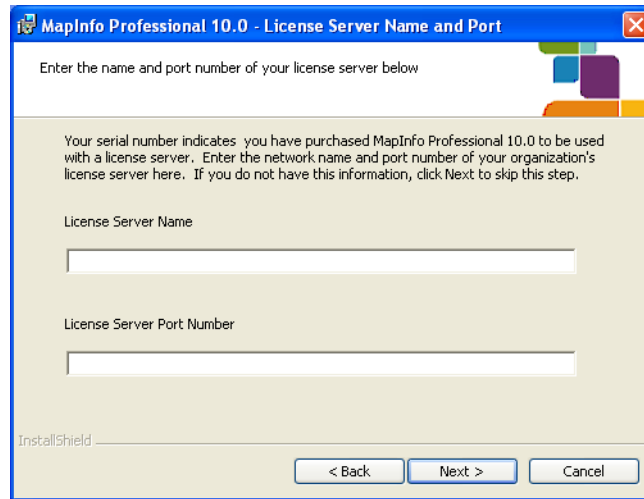


The screenshot shows the 'MapInfo Professional 10.0 - InstallShield Wizard' window. The title bar includes the product name and a close button. The main window has a header 'Customer Information' and a sub-header 'Please enter your information.' Below this, there are several input fields: 'User Name:' with a text box containing 'User'; 'Organization:' with a text box containing 'Company Name'; a checkbox labeled 'Check here if you are installing an Evaluation copy' which is currently unchecked; 'Serial Number:' with an empty text box; and 'Access Code:' with an empty text box. At the bottom left, the text 'InstallShield' is visible. At the bottom right, there are three buttons: '< Back', 'Next >', and 'Cancel'.

5. Type your name, organization name, serial number, and access code in the corresponding fields. The serial number and access code are listed on the Product Activation Information Card in the product box and are used to activate your product. Click **Next** to continue.

Note Do not select the check box. Doing so installs an evaluation copy of MapInfo Professional. If you select to install an evaluation copy, then you may activate your copy after installation using with your serial number and activation code.

6. Do one of the following:
 - If your organization purchased node-locked licenses, the third character of your serial number is "N". Skip this step and go to **step 7**.
 - If your organization purchased concurrent licenses, the third character of your serial number is "S". In those cases, the License Server Name and Port screen displays on the screen.



If you know the license server name and port number, enter them here. If you do not, you can continue with the installation without filling in the license server name and port number. You will have another opportunity to supply this information when you start MapInfo Professional. Click **Next**.

Note For more information about node-locked and concurrent licenses, see **Chapter 3: Starting and Activating MapInfo Professional**.

7. Review the following installation types and determine which instructions are appropriate. Click one of the following and click **Next** to continue:
 - **Typical Workstation Installation.** Click this option if you will be using MapInfo Professional as a desktop application including remote database access and connectivity. See **Typical Workstation Installation on page 16** to continue these instructions.
 - **Custom Workstation Installation.** Click this option to restrict the components that are installed by the installation program. For example, you can prevent the installer from adding the help system and tools. See **Custom Workstation Installation on page 16** to continue these instructions.

Note There are no special installation instructions for installing MapInfo Professional in a Citrix environment. Citrix users follow the **Typical Workstation Installation** instructions to install MapInfo Professional.

Typical Workstation Installation

Choose this option to install MapInfo Professional program files, Online Help, Tools, Universal Translator, and Crystal Reports.

CAUTION: Make sure you have completed the directions in [Installing MapInfo Professional on page 14](#) before beginning these instructions.

To continue installing MapInfo Professional on a workstation:

1. In the Setup Type screen, click **Typical Workstation Installation**; the Destination Folder screen displays. If you have an earlier version (or versions) of MapInfo Professional installed and you do not want to overwrite that version, create a new directory name in the next step.
2. Do one of the following:
 - Click **Next** to accept the destination folder indicated
 - Click **Change** to create a new path in the Change Current Destination Folder screen. Type the new path in the **Folder name** field and click **OK** to continue. Click **Next** to continue. The Ready to Install the Program screen displays. Review your selections to ensure that the path is correct before moving on. Click **Back** to make changes.
3. Click **Install** to begin. A progress bar indicates the status of the process.

Note If you are using ODBC or Oracle Spatial for database connectivity, we install ODBC Connectivity and Oracle Spatial support by default to simplify the connectivity process.
4. When the Complete screen displays, choose **Finish** to return to the Install Products screen.

Continue to [Installing Data on page 18](#) or to [Chapter 3: Starting and Activating MapInfo Professional](#).

Custom Workstation Installation

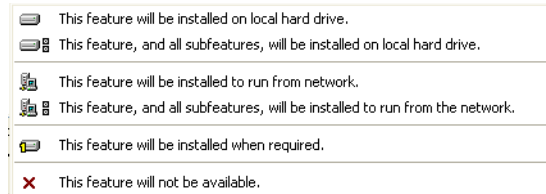
Choose this installation type to select components and drivers within the MapInfo Professional installation program. This is particularly useful if you want to save disk space by not installing the Help System, the documentation, or the MapInfo Professional tools.

CAUTION: Make sure you have completed the directions in [Installing MapInfo Professional on page 14](#) before beginning these instructions.

To continue installing using the custom workstation instructions:

1. In the Setup Type screen, click **Custom Workstation Installation**; the Custom Setup screen displays. A feature description and the space required for the feature and its sub-features displays in the Feature Description area.
2. In the Custom Setup screen you decide what components are to be installed and the directory you want them to install to. Click the feature icon to select the feature for installation. The options for a Custom Setup include:
 - **MapInfo Program Files** (you must install these files to run MapInfo Professional)
 - **Documentation** (installs user guide documents in PDF format)
 - **Tools** (installs MapInfo Utilities and Crystal Reports)

- To select a feature, click the **Down Arrow** beside it; a menu displays.



- For each feature you want to install, select one of the following:
 - This feature will be installed on local hard drive.
 - This feature, and all subfeatures, will be installed on local hard drive
 - This feature will not be available

Note For some features, there are additional options pertaining to the use of the feature from the network. Choose the option that describes your systems implementation of this feature.

When you select the first or second options in the bullets described above, the feature installs on your local hard drive in the default folder. This path displays in the **Install To:** entry below the Custom Setup list pane. To specify another path, select **Change** button. When you do the Current Destination folder screen displays allowing you to choose a new path.

To see if you have enough space on your hard drive or other mapped resources, click the **Space** button. The Disk Space Requirement screen displays the disk size, the amount of available space, and the amount of space the selected install would take.

Note To avoid installing a subfeature, select **This feature will not be available.**

- After you select all the custom options click **Next** to display the Ready to Install the Program screen.
- Click the **Install** button to begin the installation of MapInfo Professional with the features you selected. The Installing MapInfo Professional screen displays with a progress bar indicating the status.
- At the end of the installation, the prompt: "Would you like to check our web site for any current updates to our product?" displays. If you have an Internet connection, click **Yes** to access the Pitney Bowes Business Insight Corporation web site containing information about product updates.
- When the Complete screen displays, choose **Finish** to return to the Install Products screen.

Continue to [Installing Data on page 18](#) or to [Chapter 3: Starting and Activating MapInfo Professional](#).

Installing Data

To help you get started, Pitney Bowes Business Insight provides you with some United States-based and world-wide maps you can use as a background to your data. Use these instructions to install this free data.

To install the free data provided with MapInfo Professional:

1. From the MapInfo Professional data CD, choose **Install** from the CD Browser.
Choose **Install Introductory Data and Industry Samples**.
2. The Welcome screen displays.
Choose **Next** to continue.
3. The Software License Information screen displays.
Choose **Yes** to accept the terms of the agreement and to continue the installation process.
4. The Select Components screen displays.
Select the product for which you will be installing the data and click **Next** to continue:
 - MapInfo Professional
 - MapInfo Run Time
5. The Choose Destination Location screen displays.
Specify the directory where the data will be installed. Use the **Browse** button to select a directory if necessary or accept the default directory. Click **Next** to continue.
6. The Setup Type screen displays.
Choose one of these options:
 - **Custom Install** to choose which datasets to install, and then click **Next**.
The Select Components screen displays. Select the check box beside each dataset you want to install. The size of each dataset displays, as well as space required and space available. To see the subcomponents of the data you selected, click **Change**.
 - **Typical Install** to Install all datasets, and then click **Next**.
A question prompt displays. Click **Yes** to the “Would you like setup to display workspace icons” prompt if you want to create an icon for each data set you choose.
The Select Program Folder screen displays if you chose to set up Workspace icons. Select the program folder where the icons will be created. Choose **Next**.
7. The Start Copying Files screen displays.
Review the selections you have chosen and click **Back** to return to any screen to change your selections. When you are ready to begin the installation, click **Next**.
8. The Setup Complete screen displays.
Click **Finish**.

Continue to [Installing Related Programs and Resources on page 19](#) or to [Chapter 3: Starting and Activating MapInfo Professional](#).

Getting More Data

To learn more about our data products, click the **Obtain More Data** option in the MapInfo Professional Data screen during the Data Installation process or click **MapInfo Data Products on the Web** in the **Help** Menu. If you have a Browser installed, you will be automatically connected to

Pitney Bowes Business Insight Corporation's web site, where we provide detailed information about our World Wide Data Products. We have over 350 data products to choose from—products that provide both reliable and current information.

Installing Related Programs and Resources

This section contains the instructions for installing the ECW Compressor, the Blue Marble GPS, and the documentation associated with MapInfo Professional.

The first time you start MapInfo Professional you must activate your product license. After installing related programs and resources, continue to **Chapter 3: Starting and Activating MapInfo Professional**.

Installing the ECW Compressor

The ECW raster handler allows you to open and display raster images compressed in the ECW format. We recommend that you exit all Windows programs before installing.

1. Choose **Install Products** from the MapInfo Professional CD Browser.
2. Choose **ECW Compressor**. The Welcome screen displays. Choose **Next** to continue the installation process.
3. The Software License screen displays. Choose **Yes** to accept the terms of the agreement and to continue the installation process.
4. The Choose Destination Location screen displays. Specify the directory where ECW Compressor will be installed.
5. The Select Program Folder screen displays. Select a folder. Choose **Next** to continue.
6. The Setup Complete screen displays: choose to display the ReadMe file and/or create a shortcut on your desktop. Choose **Finish**.

Installing Global Positioning Software (GPS)

To install Global Positioning Software from Blue Marble:

1. From the CD menu, click **Install Products** and then **Free Utilities**.
2. Click **Install GPS Support**. You will be prompted to exit all applications before installing. Choose **OK**.
3. The MapInfo Special Edition screen displays. Choose **OK**.
4. The Select Destination Location screen displays. Specify the directory where GPS will be installed.
5. The Software License screen displays. Choose **YES** to accept the terms of the agreement and to continue the installation process.
6. The Add to the Start Menu screen displays: click **Yes** to add a shortcut to the **Start** menu.
7. The ReadMe displays; choose **OK** to exit the ReadMe.

Installing the Online References

MapInfo Professional installs documentation, such as the following, to the Documentation subfolder of your installation directory:

- *MapInfo Professional Licensing and Activation*
- *MapInfo Professional Install Guide*
- *MapInfo Professional User Guide*
- *MapInfo Professional Printing Guide*
- *MapInfo License Server Utility User Guide*

Note If you have any questions about the use of the Acrobat Reader, contact Adobe support at www.Adobe.com.

Troubleshooting your Installation

The Installer must be run from a drive with a letter such as G: and not from an explicit UNC path. For example, you might have the MapInfo Professional CD in your computer as USERSPC. Other users may share this device as USERSPC; however, it would not contain a drive letter. The MapInfo Professional Installation program requires a drive letter.

To remedy this situation, map your network drive to a specific drive letter:

1. In Windows Explorer, right-click the shared directory or CD-ROM that contains the MapInfo Professional SETUP.EXE and select **Map Network Drive**.
2. Choose a drive letter to map.
3. Run the Installation Program again from the newly mapped drive letter.

Modifying or Removing MapInfo Professional

Use the Program Maintenance feature of the CD Browser to modify, repair, or remove MapInfo Professional.

Note To set MapInfo Professional preferences, see *Setting MapInfo Professional Preferences* in the Help System.

To access Program Maintenance:

1. Click **Install Products** from the MapInfo Professional CD Browser.
2. Click **MapInfo Professional**. The Welcome screen displays. Choose **Next**. The Program Maintenance screen displays.

3. Choose modify, repair, or remove MapInfo Professional based on your needs.
 - Click **Modify** to display the Custom Setup screen.
 - Click **Repair** to repair installation errors in the program.
 - Click **Remove** to remove an existing copy of MapInfo Professional from your system. The installer displays the Remove the Program dialog box. Click **Remove** to uninstall the product's programs from your system.

You can also access the Program Maintenance screen from the **Start** menu by clicking **Control Panel** and then **Add/Remove Programs** and finally **MapInfo Professional**.

For information on node-locked license transfer options at uninstall, see **Chapter 3: Starting and Activating MapInfo Professional**.

Removing MapInfo Professional from your System using Control Panel

Remove MapInfo Professional by accessing the CD Browser, Program Maintenance screen, or by choosing the Add/Remove Programs option in the Control Panel in Windows.

Removing MapInfo Professional from your System using the CD Browser

To uninstall MapInfo Professional:

1. Choose **Install Products** from the CD Browser.
2. Choose **MapInfo Professional**. The Welcome screen displays.
3. Choose **Next**. The Program Maintenance Screen displays.
4. Choose **Remove**.

Starting and Activating MapInfo Professional

The first time you start MapInfo Professional you are asked to activate your product using the serial number and access code you supplied during the installation. This section describes the activation process for the type of license your organization purchased.

To start MapInfo Professional, do one of the following:

- Double-click the MapInfo Professional icon on your desktop.
- From the **Start** menu, select **MapInfo Professional 10** from the Selected Program folder.

Topics in this Section:

- ♦ **Determine the Type of License you have**24
- ♦ **Node-Locked Licenses**24
- ♦ **Concurrent Licenses**33
- ♦ **Distributable Licenses**37

Determine the Type of License you have

The serial number and access code that you enter during the installation indicates to MapInfo Professional what type of license you have. Depending on the license type, MapInfo Professional will guide you through activating the product (if your organization purchased node-locked licenses) or connecting to a license server (if your organization purchased concurrent or distributable licenses).

To determine what type of license you have:

- If the third character of your serial number is **"N"**, your organization purchased node-locked licenses. For activation instructions, see [Node-Locked Licenses on page 24](#).
- If the third character of your serial number is **"S"**, your organization purchased concurrent licenses. For activation instructions, see [Concurrent Licenses on page 33](#).
- If you have limited access to email, or have installed MapInfo Professional in a Citrix environment, then your organization purchased distributed licenses. Your system administrator will provide you with a license server machine name and port number. For activation instructions, see [Distributable Licenses on page 37](#).

Node-Locked Licenses

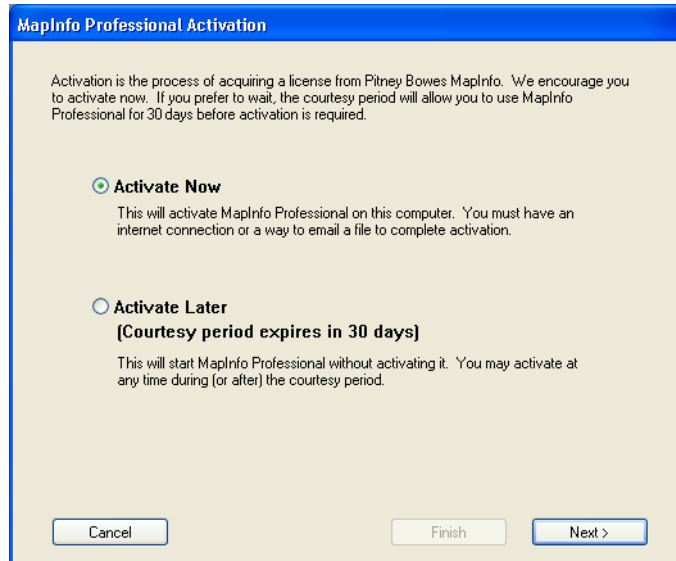
Node-locked licenses enable you to run MapInfo Professional on a specific computer. If you purchased node-locked licenses, your installation of MapInfo Professional must be activated before you can use it. Activation is the process of acquiring a license from MapInfo. This section explains the activation options available for node-locked licenses.

Product Activation

MapInfo uses the serial number and access code you supplied during the installation to activate the product. If you need to refer to these numbers again, the serial number and access code are located on the product box and on the Product Activation Information Card.

To activate MapInfo Professional:

1. Install MapInfo Professional, if you haven't already, and start the product. When you start MapInfo Professional for the first time after installation, the Activation Wizard launches. The MapInfo Professional Activation dialog box displays on the screen.



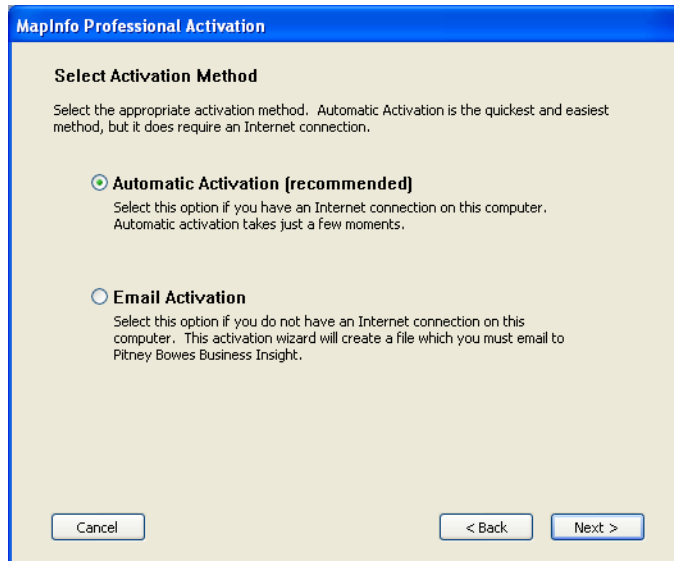
2. Select when you want to activate MapInfo Professional. Select one of the following:
 - **Activate Now**—Select this option to start activation now.
 - **Activate Later**—Select this options to start a 30-day courtesy period in which you can use MapInfo Professional without activating the product.
3. Click **Next**.

If you selected **Activate Now**, go to **step 4**.

If you selected **Activate Later**, the Activation Wizard closes and the courtesy period begins. The courtesy period enables you to use MapInfo Professional immediately and active the product at a time that is convenient for you. Each subsequent time you start MapInfo Professional, a dialog box displays informing you of the time remaining in the courtesy period and giving you the opportunity to activate the product.

You must activate MapInfo Professional sometime during the courtesy period to avoid interrupting your work. When the courtesy period ends, you will not be able to use MapInfo Professional until you activate it.

4. If you selected **Activate Now**, the Select Activation Method dialog box displays on the screen:



5. Select one of the following activation methods:
- **Automatic Activation**– Select this option if you have an Internet connection. The Activation Wizard will make a one-time connection with a MapInfo server. Using the serial number and access code you provided during the installation, the Activation Wizard will retrieve one of the licenses your organization purchased and associate it with your computer.
 - **Email Activation**– Select this option if you do not have an Internet connection. The Activation Wizard will guide you through the creation of an Activation Request file that you must then email to MapInfo.

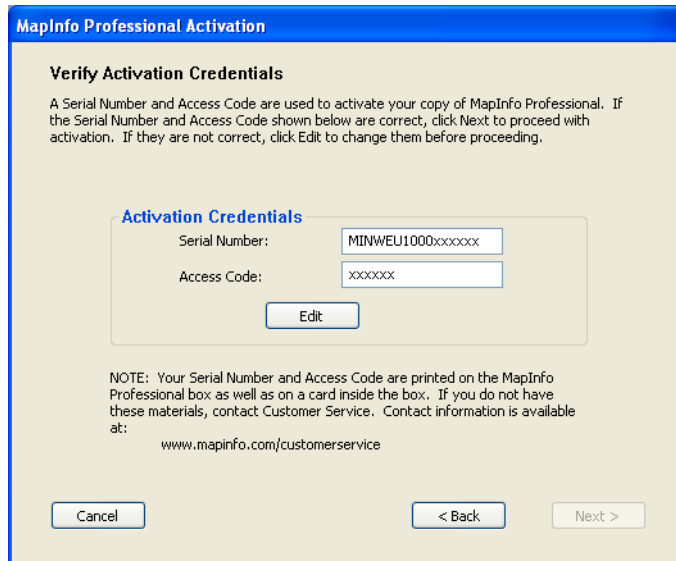
6. Click **Next**.

If you selected **Email Activation**, go to **step 7**.

If you selected **Automatic Activation**, the Activation Wizard takes a few moments to transfer the activation credentials to MapInfo and perform the activation. A MapInfo Activation message displays on the screen to tell you that the activation was successful.

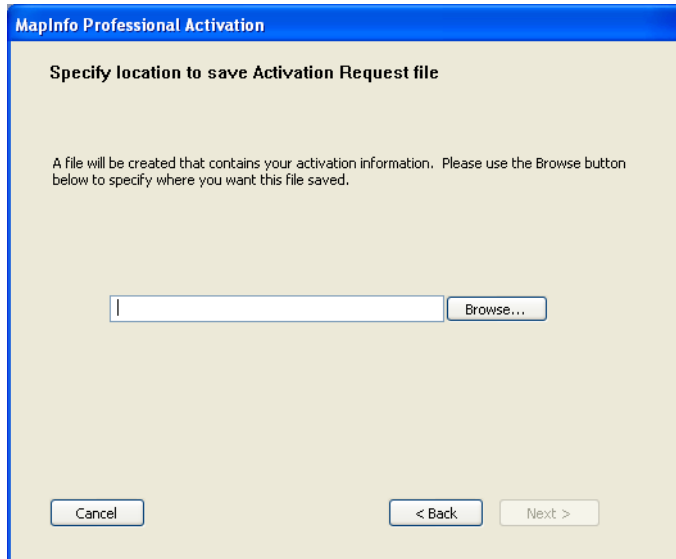
Click **OK**. The Activation Wizard closes, and MapInfo Professional is ready to use. You are finished.

7. If you selected **Email Activation**, the Verify Activation Credentials dialog box displays on the screen:



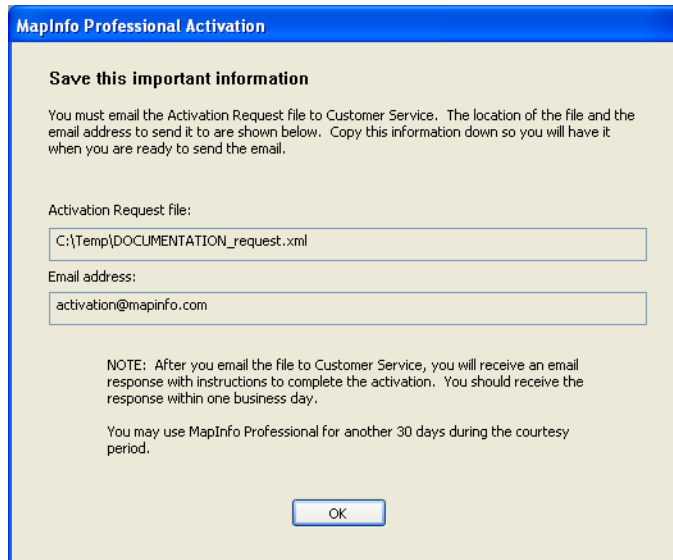
Double-check that your serial number and access code are correct. Click **Edit** if you need to make any corrections.

8. Click **Next**. The Specify location to save Activation Request file dialog box displays on the screen:



Select a folder in which to save the Activation Request file. Click the **Browse** button to navigate to the desired location. Click **OK**. The path and filename of the Activation Request file appear in the box. The Activation Request contains your serial number and access code, plus information that identifies the computer you are activating on.

9. Click **Next**. The Save this important Information dialog box displays on the screen.



This dialog box provides the information to send your Activation Request file to MapInfo. The full path and filename of the Activation Request file is displayed in the **Activation Request File** box. The email address to send the file, `activation@mapinfo.com`, is displayed in the **Email address** box.

Take a few moments to write down the location of the Activation Request file and email address to send the Activation Request file.

CAUTION: Please do not edit the Activation Request file in any way. If you do, MapInfo may not be able to process it and your activation will be delayed.

10. Click **OK**. The Activation Wizard closes and the courtesy period automatically starts.

11. Email your Activation Request to MapInfo at this address:

`activation@mapinfo.com`

You can finish email activation when you receive an Activation Response file from MapInfo. You should receive the Activation Response file within one business day.

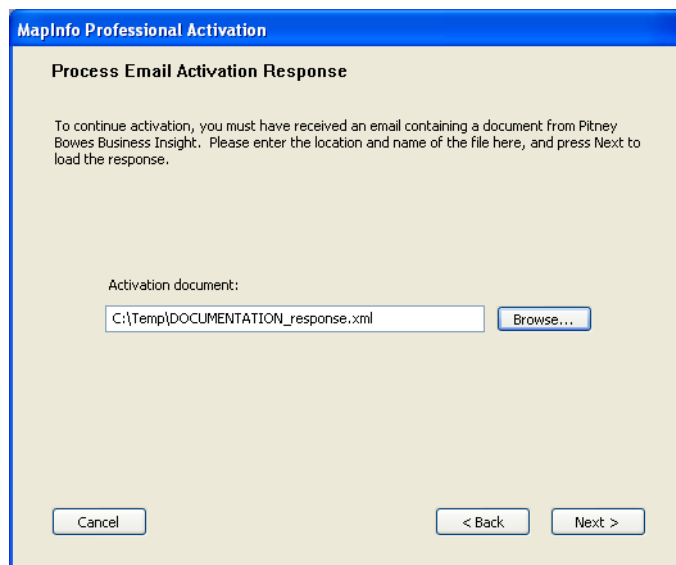
Finishing Email Activation

When you receive the Activation Response file from MapInfo, you are ready to finish activating MapInfo Professional.

To finish email activation:

1. Copy the Activation Response file you received from MapInfo to an accessible folder on your computer and make note of the location.
2. Open MapInfo Professional. If MapInfo Professional is already open, exit and restart the program. A dialog box displays asking you if you want to finish activating MapInfo Professional.
3. Click **Yes**. The Process Email Activation Response dialog box displays on the screen.

4. Click **Browse** to navigate to the location of the Activation Response file. Click **Open** in the Locate Response file dialog box when you have located the file.
5. The path and filename of the Activation Response file appear in the box.



6. Click **Next**.
7. A MapInfo Activation message displays on the screen to tell you that the activation was successful. Click **OK**. The MapInfo Professional Activation Wizard closes, and MapInfo Professional is activated and ready to use. You are finished.

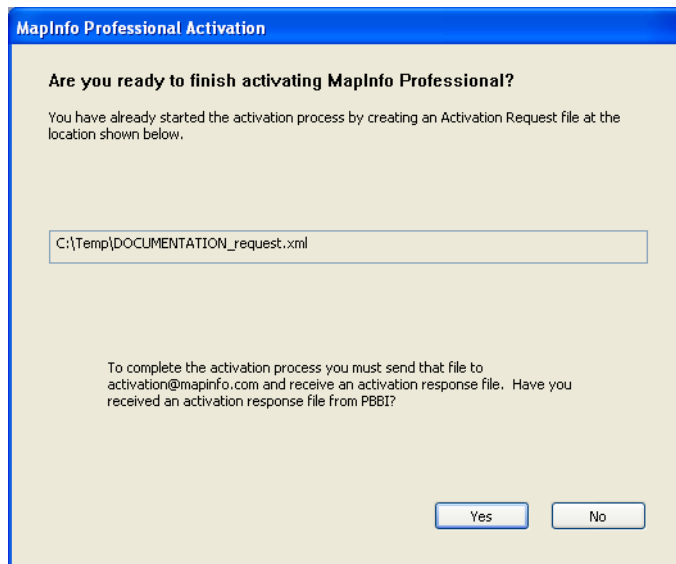
Note Once you have seen the confirmation message stating that your product has been activated, you can delete the email response file from your system.

To check the status of your activation, choose **Help > About** and review the contents of this dialog box.

Using MapInfo Professional While You Wait

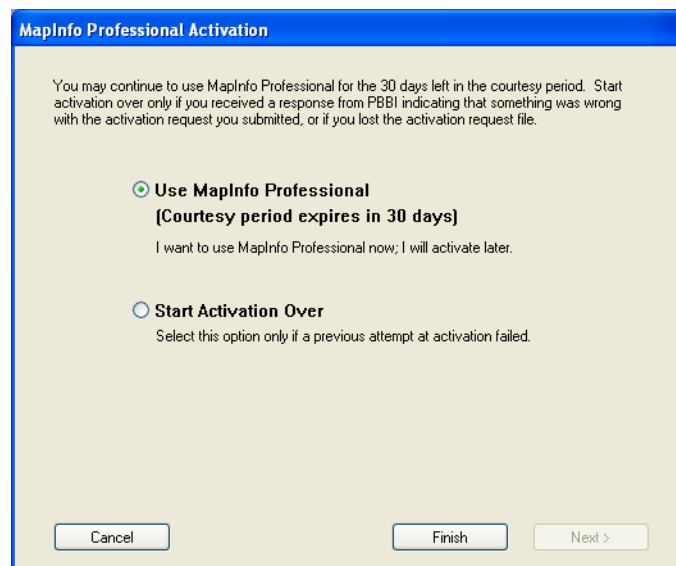
While you are waiting for MapInfo to send you the Activation Response file, you can continue to use MapInfo Professional under the courtesy period. To ensure uninterrupted use of MapInfo Professional, we encourage you to activate before the courtesy period expires.

Each time you open MapInfo Professional subsequent to initiating email activation, a dialog box displays asking if you want to finish activating MapInfo Professional. When you receive the Activation Response file from MapInfo you are ready to finish activation.



To continue using MapInfo Professional under the courtesy period:

1. Click **No** in the dialog box.
2. A dialog box displays on the screen that provides information about the courtesy period and asks you how you would like to proceed.



Select one of the following:

- **Use MapInfo Professional**—Select this option if you have not received an Activation Response file yet and you want to use MapInfo Professional under the courtesy period.
- **Start Activation Over**—Select this option if previous activation attempts have failed.

If you selected **Use MapInfo Professional**, click **Finish**. The Activation Wizard closes and MapInfo Professional is ready to use under the courtesy period. You can finish the activation at a later time.

If an earlier attempt to activate MapInfo Professional failed, and you selected **Start Activation Over**, click **Next**. The Activation Wizard restarts, giving you the opportunity to try the activation again.

Transferring a Node-Locked License

Node-locked licenses are associated with a particular computer. To use MapInfo Professional on a computer other than the one on which you have it activated, and without consuming another license, you can transfer your license from one computer to another. For example, you received a new computer at work and you want to run MapInfo Professional on the new computer instead of on the old one.

Note Your organization is limited to either 10 license transfers per year or two times the number of licenses you have purchased per year, whichever number is greater. For example, an organization with 50 node-locked licenses of MapInfo Professional is permitted 100 transfers per year. This lets you upgrade the entire set of user computers and provides for license transfers, such as when employees change roles.

Transferring Your License to another Computer

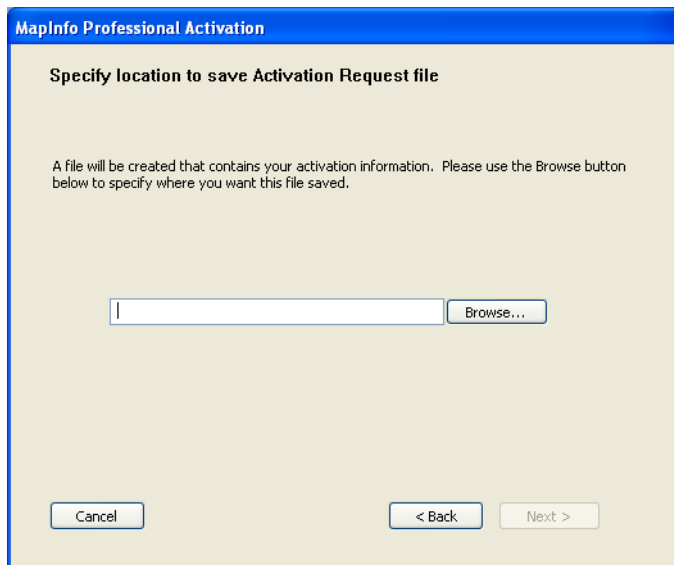
To transfer a node-locked license:

1. Open MapInfo Professional.
2. Choose **Help > Licensing > Transfer license**. The MapInfo Professional License Transfer dialog box displays on the screen.
3. Click **Yes**. The Select Transfer Method dialog box displays on the screen.

Select one of the following transfer methods:

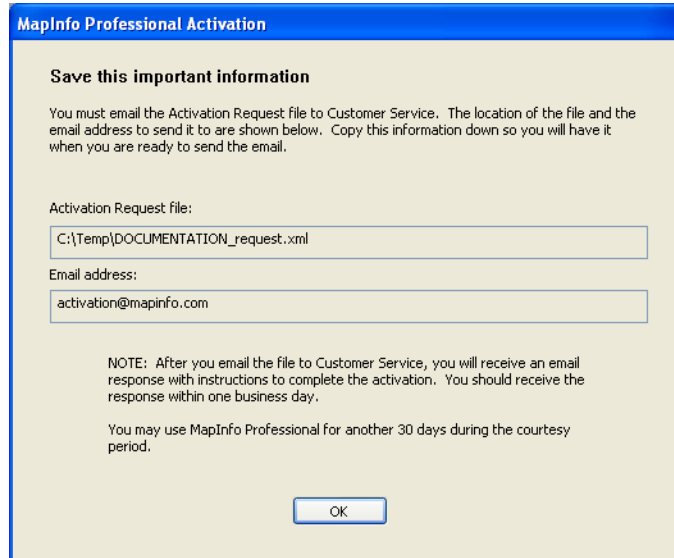
- **Automatic Transfer**—Select this option if you have an Internet connection. Your license will be automatically transferred to MapInfo. You can retrieve the license by activating MapInfo Professional on another computer.
 - **Email Transfer**—Select this option if you do not have an Internet connection. You will be guided through the creation of a Transfer Request file, which you must then email to MapInfo.
4. If you selected **Email Transfer**, go to **step 6**.
If you selected **Automatic Transfer**, the License Transfer Wizard takes a few moments to transfer the license to MapInfo. When this process is finished, a message displays on the screen informing you that the transfer was successful.
 5. Click **OK**. MapInfo Professional closes and can no longer be run from this computer. The license is now available for you to activate MapInfo Professional on another computer.

- If you selected **Email Transfer**, the Save Transfer Request File dialog box displays on the screen.



Select a folder in which to save the Transfer Request file. Click the **Browse** button to navigate to the desired location. Click **OK**.

- Click **Next**. The Save this important information dialog box displays on the screen.



This dialog box provides the information to send your Transfer Request file to MapInfo Customer Service.

The full path and filename of the Transfer Request file is displayed in the **Transfer Request File** box. The email address to send the file, **activation@mapinfo.com**, is displayed in the **Email address** box.

Take a few moments to write down the location of the Transfer Request file and email address to send the Transfer Request file.

CAUTION: Please do not edit the Activation Request file in any way. If you do, MapInfo may not be able to process it and your activation will be delayed.

8. Click **OK**. MapInfo Professional closes and can no longer be run on this computer unless you activate it again.
9. Email the Transfer Request file to MapInfo at the following address:
activation@mapinfo.com
10. MapInfo Customer Service will send you an email reply confirming that the transfer was successful. You should receive this confirmation within one business day.

The license is now available for you to activate MapInfo Professional on another computer.

Uninstall Transfer Options

If you have a node-locked license and you uninstall MapInfo Professional, you have the option of transferring the license to MapInfo.

If you intend to install MapInfo Professional on another computer, transfer the license to MapInfo so that the license is available. When you install MapInfo Professional on the desired computer, you will be prompted to activate the product.

If you intend to reinstall MapInfo Professional on the same computer, do not transfer the license. When you reinstall, you can reuse the same license without activating.

When you begin uninstalling MapInfo Professional, the Transfer License Now? dialog box displays on the screen:

Do one of the following:

- Click **Yes** to transfer the license to MapInfo. The License Transfer Wizard will start and guide you through the transfer process. See [Transferring Your License to another Computer on page 31](#)
- Click **No** to keep the license on this computer. The uninstall operation continues. When you reinstall MapInfo Professional, you can reuse the license without activating.

Concurrent Licenses

Concurrent licenses enable you to install MapInfo Professional on any number of computers. A license server, installed and maintained by your organization, limits the number of computers that can run MapInfo Professional at any given time to the number of concurrent licenses purchased by your organization.

In the concurrent licensing scheme, you must connect to a license server on your network to check out a license before you can run MapInfo Professional. Checking out a license is the process of obtaining a license from the license server. You will need to supply the license server machine name and port number to connect to the license server. You can do this either during installation or the first time you run MapInfo Professional. After you have established a license server connection, the check out occurs automatically.

A license server administrator from your organization installs and maintains the license server. The license server administrator must also perform the following tasks:

- Activate the license server to make licenses available for check out.
- Inform users of the license server machine name and port number.

Connecting to a License Server

If your organization purchased concurrent licenses for MapInfo Professional, you will need to connect to a license server to run the product.

To connect to the license server, MapInfo Professional must have the license server name and port number. Your license server administrator will provide you with this information.

Connecting During Installation

The installation program will ask you for the license server name and port number. If you know them at install time, enter them. When you start MapInfo Professional, you will be connected to the license server and a license will be checked out automatically.

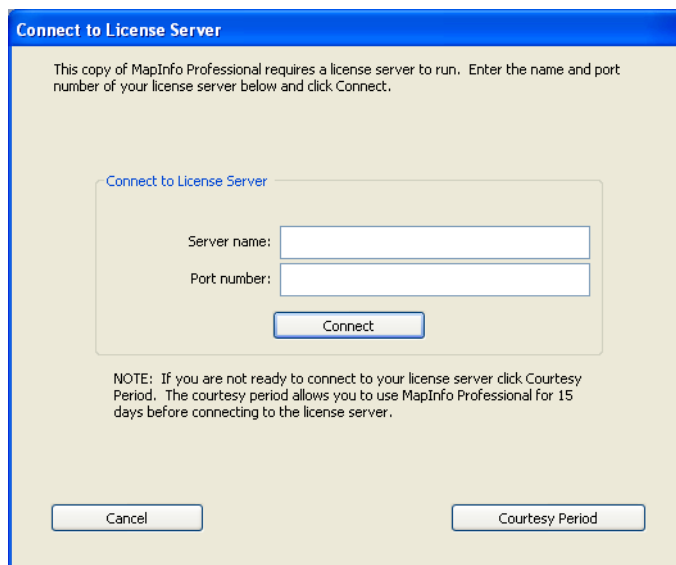
If you do not have this information at the time you install MapInfo Professional, the installation program will enable you to continue with the installation without filling in the license server name and port number. You will have another opportunity to connect to the server when you start MapInfo Professional.

Connecting after Installation

If you did not specify the license server name and port number during product installation, you will be prompted for that information when you start MapInfo Professional. You will also be prompted if MapInfo Professional cannot connect to a running license server using the server name and port number you provided at install.

To connect to the license server after you install MapInfo Professional:

1. Start MapInfo Professional. The Connect to License Server dialog box displays on the screen.



If you have the license server name and port number, proceed with these instructions. If you do not, see [Starting the Courtesy Period on page 35](#).

2. Enter the license server name in the **Server name** box.
3. Enter the port number in the **Port number** box.
4. Click **Connect**. MapInfo Professional takes a few moments to connect to the license server and check out a license.

When the license is checked out, the Connect to License Server dialog box closes. You are finished. MapInfo Professional is licensed and ready to use. After you successfully connect to your license server once, a license will be checked out automatically when you start MapInfo Professional.

Starting the Courtesy Period

If you do not have the license server name and port number, but you want to start using MapInfo Professional, you can start a 30-day courtesy period during which you can use MapInfo Professional without connecting to the license server.

To use the courtesy period to run MapInfo Professional:

1. Open MapInfo Professional. The Connect to License Server dialog box displays on the screen.
2. Click **Courtesy Period**. A MapInfo Activation message displays telling you that the courtesy period started successfully.
3. Click **OK**. MapInfo Professional is ready to use under the courtesy period.

You can connect to the license server and check out a license when you receive the license server name and port number from your license server administrator.

Connection Failures

Failure to connect to the license server can occur for several reasons.

First, although you may know the license server name and port number, the license server administrator may not have had an opportunity to install it yet. In this case, MapInfo Professional cannot find the license server you specified. To use MapInfo Professional, you can start the courtesy period, and then connect when you know that the license server has been installed and is running.

Failures can also occur if the license server has been moved to a different computer. In this case, you were previously able to connect to the license server, but the license server was moved since the last time you used MapInfo Professional. MapInfo Professional is looking for the license server in its previous location. If MapInfo Professional cannot connect to the license server at startup, the Connect to License Server dialog will display on the screen. See **Connecting after Installation on page 34** for information. See your license server administrator for the correct license server name.

Finally, if all licenses have been checked out, you will not be able to run MapInfo Professional. You are able to connect to the license server, but you cannot check out a license because they are all in use. You will need to wait until a license becomes available before you can check out a license.

Borrowing a Concurrent License

Some concurrent licenses can be borrowed. Borrowed license enable you to use MapInfo Professional when your computer is not able to connect to your license server. For example, if you have MapInfo Professional installed on a laptop computer and you are going to be away from the office, you can borrow a license to use MapInfo Professional while you are away. Check with your license server administrator to find out if your concurrent license includes borrowing.

When you borrow a license, be sure to specify a borrow period that gives you sufficient time to use MapInfo Professional before the license expires. If the license expires before you have an opportunity to return it, the license is automatically returned to the license server. MapInfo Professional is unusable until you can connect to your network again and check out a license.

To borrow a license, the computer that you want to put the borrowed license on must have MapInfo Professional installed and be connected to the license server.

To borrow a license:

1. Open MapInfo Professional.
2. Choose **Help > Licensing > Borrow license**. The Borrow MapInfo Professional License dialog box displays on the screen.
3. Specify the number of days that you want to borrow the license. You can specify from one to 365 days.
4. Click **Borrow License**. After a few moments, MapInfo Activation message displays on the screen to tell you that the license was borrowed from the server successfully.
5. Click **OK**.

You can use MapInfo Professional on this computer while not connected to your network for the borrow period that you specified.

Returning a Borrowed License

To return a borrowed license, you must reconnect the computer that is using the borrowed license to your network. If it is not connected, the Return borrowed license command will not be available.

To return a borrowed license:

1. Reconnect the computer to your network.
2. Open MapInfo Professional. A dialog box displays to tell you on what date the borrowed license is going to expire.
3. Click **OK**.
4. Choose **Help > Licensing > Return borrowed license**. The Return borrowed license to license server dialog box displays on the screen.
5. This dialog box explains how a license is returned. Click **OK**.
6. A MapInfo Activation message displays on the screen to tell you that the license has returned to the license server.
7. Click **OK**.

Distributable Licenses

We have developed a licensing model that allows companies to "distribute" permanent licenses using your MapInfo License Server, which is available on the MapInfo Professional CD. This model was developed for customers who have limited access to email or to the Pitney Bowes MapInfo FNO server. Distributed licenses follow a similar activation procedure to other models that are handled using your License Server. For instructions on installing the License Server, please see the License Server *User Guide*.

You can also return a distributed license to your License Server if you need to transfer it to another computer. For these instructions, see [Transferring a Distributed License on page 39](#).

Before you start the distributed activation process, make sure you have the following pieces of information from your License Server system administrator:

- The correct serial number and activation code
- The License Server machine name
- The port number for the server

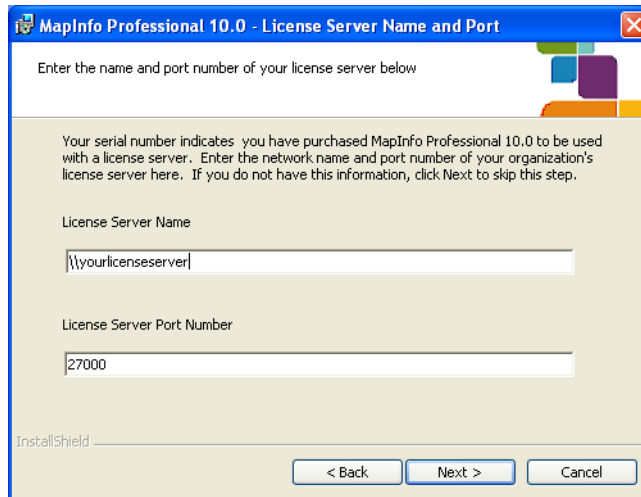
Then you can begin your distributed license installation and activation.

Activating a Distributable License

To activate a distributed license:

1. Make sure your MapInfo License Server is running. Check to see that the server is set up properly and contains the appropriate activated licenses.
2. Begin the MapInfo Professional installation process as you would with any other license model.

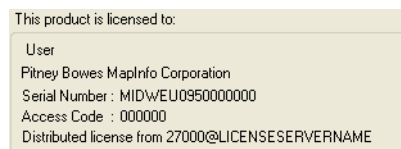
- When you are prompted for your serial number and access code, enter the distributed license serial number and activation code. Distributed license serial numbers begin with "MID". Click **Next**. The License Server Name and Port dialog box displays.



Note The port number defaults to **27000** but it can be set by your License Server system administrator. Check with the administrator if the port number is not working.

- Type in your License Server's (machine) name in the first field and the port number in the second or leave the default entry in place. Click **Next** to continue. The remaining installation prompts are the same as in *Installing MapInfo Professional* in the *User Guide*.
- When you open MapInfo Professional for the first time, one of the following occurs:
 - If the application finds the license server, and the serial number, activation code, and port numbers are correct, the application opens and the product is activated.
 - If the application did not access the license server, did not recognize the serial number or activation code, or did not recognize the port number, an error message displays. We recommend that you review these components to ensure that they are correct and/or work with your system administrator to review these four pieces of information. Correct the erroneous information and begin the activation process again.

After you activate your license, you can review the licensing details in MapInfo Professional by selecting **Help > About this MapInfo Product**. The About this MapInfo Product dialog box displays:



The serial number, access code, and licensing details display in this box for future reference.

Transferring a Distributed License

You can transfer a distributed license to your License Server, when you want to move the license to another computer.

Note Before making any hardware changes to your PC (such as disk re-formatting) please remember to return your activated license back to Pitney Bowes MapInfo or to your License Server. After your hardware has been changed you may then re-activate your license.

To transfer a distributed license to your License Server:

1. Choose **Help > Licensing > Transfer License**. The Return distributed license to license server dialog box displays.



2. Click **OK** to transfer the distributed license to the server. After the transfer is complete, a confirmation message displays. You can then install MapInfo Professional again on another computer using the same serial number, activation code, license server name and path, and port number.

If you have unsaved or open MapInfo table data, the Save Modified Table Data dialog box displays. This dialog box helps you save or discard data before you transfer your license to your License Server. Click the appropriate option to save or discard this data:

- Click **Save** to save the open table data
- Click **Save All** to save the open data in the appropriate data tables
- Click **Discard** to close the open table without saving the modified data
- Click **Discard All** to close the open tables without saving the modified data

After you make your selection in this dialog box, the transfer continues as described above.

Note After you return the license, the application closes. Since MapInfo Professional is still installed on your computer, if you open the application again, the product will attempt to activate another distributed license. If the license is not available, you can use the courtesy license for the balance of your 30 day trial.

Part A: Advanced Topics for System Administrators

Sections in this Part

♦ Workgroup Installations	43
♦ Silent Installation Procedures	49
♦ Advanced Configuration Options for System Administrators	55

Workgroup Installations

MapInfo Professional is a desktop application that places user data on a map to simplify business analysis for data with a spatial component. This section will assist you in setting up a MapInfo Professional network share workgroup that allows users to share application data resources (such as coordinate system information and templates). Sharing these resources can unify the look of user maps and provide consistency in their data.

There are two steps to this Workgroup installation process:

1. **System administrators** create a shared location for the application data files and create a method for users to install MapInfo Professional on their own computers.

Before you begin, see [Understanding the Workgroup Installation Process](#). To get started, see [Beginning a Workgroup Installation \(System Administrators\)](#).

2. **Users** install the application on their computers, pointing to the shared location for their Application Data Files.

To complete a workgroup installation, go to [Completing a Workgroup Installation \(MapInfo Professional Users\)](#)

Topics in this Section:

- ◆ [Understanding the Workgroup Installation Process44](#)
- ◆ [Beginning a Workgroup Installation \(System Administrators\) . .44](#)
- ◆ [Completing a Workgroup Installation \(MapInfo Professional Users\)47](#)

Understanding the Workgroup Installation Process

The workgroup installation process lets a system administrator store commonly used files in a shared, central location to accommodate Vista requirements. This workgroup installation allows users to retrieve the Application Data Files (such as the MAPINFOW.PRJ file and custom symbols) from a shared, network location but install the program locally. Using this model, all users can share coordinate system settings, templates, and custom symbols.

The workgroup install process is organized in to two steps, so that you can choose to have users:

- install MapInfo Professional from a network location, or
- install MapInfo Professional from a CD you create for their use.

If copying the contents of the MapInfo Professional CD to another location, copy both the MI_PRO and Pro_WG folders together to the same place. The workgroup install has a dependency to the MI_Pro folder, so both folders must be located together under the same parent directory. If they are not located together, then the Workgroup Installer installs only Application Data Files.

If you have any questions or difficulty with this process, please refer to the *MapInfo Professional User Guide* to determine the appropriate Pitney Bowes Business Insight resource to call.

What are the Application Data Files?

Application Data Files are user files that affect the look and basic settings of your MapInfo maps. Specifically:

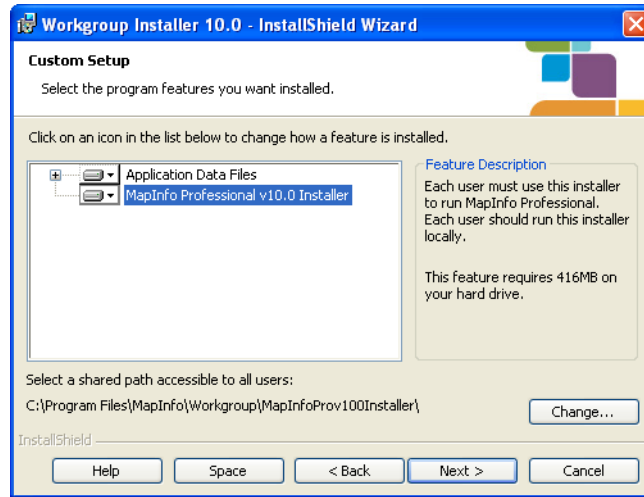
- Configuration files:
 - MAPINFOW.ABB (The abbreviations file)
 - MAPINFOW.CLR (The colors file)
 - MAPINFOW.FNT (The fonts file)
 - MAPINFOW.MNU (The menu file)
 - MAPINFOW.PEN (The pen file)
 - MAPINFOW.PRJ (The projections file)
 - WFS and WMS server lists
- Thematic Templates
- Custom Symbols
- Graph Support
- Layout Templates

Beginning a Workgroup Installation (System Administrators)

To prepare for a Workgroup installation:

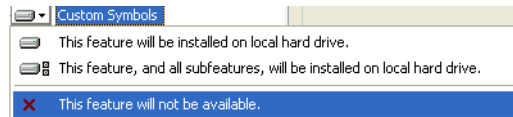
1. Inset the installation CD, click **Install Products > MapInfo Professional > MapInfo Professional Workgroup**. The Workgroup Install dialog box displays.
2. Click **Install MapInfo Workgroup**. At the Welcome dialog box, click **Next**.

- In the License Agreement dialog box, click **I agree** and click **Next**. The Custom Setup dialog box displays.



Note:All Application Data Files are selected by default.

- To prevent file sharing of one or more of these file types, click the drop-down arrow beside the file type and select **This feature will not be available** from the list.

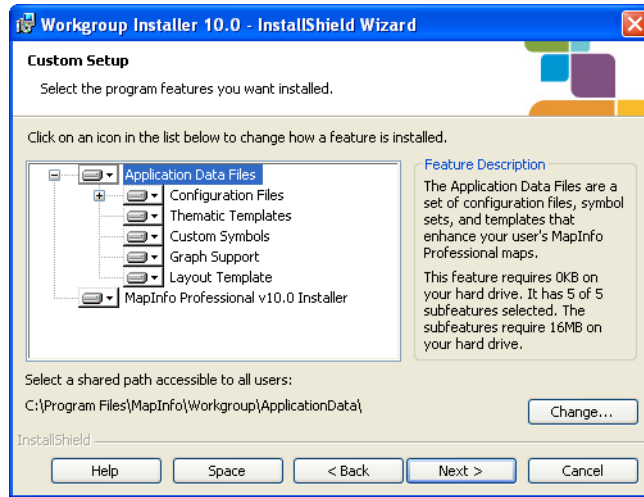


Note When you choose not to install file(s) to the shared location, MapInfo Professional uses the local copy of these file(s) instead.

- Highlight the **Application Data Files** entry and click **Change**. The Change Current Destination Folder displays. Navigate to the shared location for storing these files and click **OK**. **Make sure that this shared location is accessible by all users who need these files. Users will need read/write access to add new templates and other custom symbols to share.**

Note When users install MapInfo Professional, these same Application Data Files are also stored locally. This allows them to access these files when the shared folder is unavailable. For more details, see [Completing a Workgroup Installation \(MapInfo Professional Users\)](#) on page 47.

6. Highlight the **MapInfo Professional v10.0 Installer** entry and click **Change** to display the Change Current Destination Folder dialog box.



Do one of the following:

- *If you want your users to install MapInfo Professional from a CD you create:* select a local destination folder and click **OK**. This installer then copies the MapInfo Professional installation files to the local destination folder you selected. At the end of this process, you can create installation CDs for each user from the installation files copied to this local folder. You can then distribute these CDs to each user so they can begin their MapInfo Professional installation.
- *If you want your users to install MapInfo Professional from a central network location:* select a network location folder and click **OK**. This installer then copies the MapInfo Professional installation files to the network location folder you selected. At the end of this process, notify each user of this network destination folder so they can begin their MapInfo Professional installation.

The Custom Setup dialog box displays.

7. Click **Next** to display the Ready to Install the program dialog box. Click **Install**.
8. At the end of this process, the Completed dialog box displays. Click **Finish**.
9. Finally, do one of the following:
 - If you saved the installation files locally, create one MapInfo Professional installation CD for each user from the contents of the local folder. Make sure you copy the mode.xml file along with the other installation files in that directory.
 - If you saved the installation files on the network, notify each user of that network location so they can install MapInfo Professional locally.

During this process, you created a MODE.XML file that contains the shared location you set for the Application Data Files. When the user opens MapInfo Professional for the first time, the path to the shared location is copied from the XML file to the user's computer registry. If you need to change the network location of these files, follow the instructions in [Changing the Shared Location after Installation on page 48](#).

Note: IMPORTANT: If your users ask you about the product serial numbers, you can find them on the outside of the MapInfo Professional box. Serial numbers are also in a letter inside the box, if you need to store them.

The Application Data Files are also stored locally for use when the shared folder is unavailable. The next section describes this in more detail.

Completing a Workgroup Installation (MapInfo Professional Users)

To complete the workgroup installation, do one of the following:

- If your system administrator has given you a CD or DVD for installation, place this media in the appropriate computer drive and follow the **MapInfo Professional Installer** instructions.
- If your system administrator has placed the MapInfo Professional installer in a network location, navigate to that location and follow the **MapInfo Professional Installer** instructions.

Understanding your Workgroup Installation

When you install MapInfo Professional as part of a workgroup, you share commonly used files with the other users in your organization. Workgroups use the same configuration, template, and custom symbol files without having to copy them manually. This method supports each workgroup member in creating more consistent maps.

As part of your application's installation process, the MapInfo Professional installer creates a local copy of these Application Data Files for your use when the shared location is not available. This is very important.

- *If the shared location of your Application Data Files is available,* MapInfo Professional saves your template, symbol, and configuration work to the shared location.
- *If the shared location of your Application Data Files is not available,* MapInfo Professional saves your template, symbol, and configuration work to your local copy of these files.

Note If the shared location is not available when you open MapInfo Professional for the first time, an error displays explaining that the application will use the local Application Data Files. You can use the instructions in [Changing the Shared Location after Installation](#) to select a new shared location, if necessary.

Since typically you will access the shared location, this will not be an issue. But if you change any of the Application Data Files locally and the shared location becomes available, we recommend you copy your work to the shared location. This will ensure that your files are available when you and your co-workers need them.

A Note about Graph and Theme Template Files

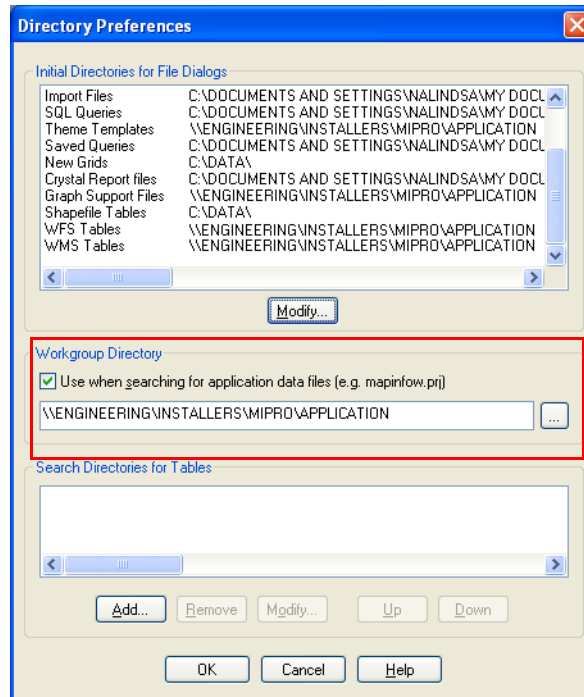
The search for graph and theme template files is dependent upon the folder setting in the Directory Preferences dialog box. If these preferences do not exist in the network location, the application searches for files locally.

Changing the Shared Location after Installation


To change the shared location for these files after installation, use the Directory Preferences dialog box. Each user in the Workgroup needs to follow this procedure to maintain these shared files.

To change the application data file location for a Workgroup user:

1. Choose **Options > Preferences > Directories** to display the Directory Preferences dialog box.



The shared location displays in the Workgroup Directory field.

2. You can reset the Workgroup folder in one of these ways:
 - To set a new shared location, enter a new path in the field provided or click  to select a new shared path.
 - To use local files only, clear the **Use when searching for application data files** check box.

Note You can use named drives or UNC paths in the Workgroup Directory field.

3. Click **OK** to confirm your change. The application saves this new path to your registry. Each time you open MapInfo Professional after this, the application uses this new path to access the Application Data Files.

Silent Installation Procedures

This chapter helps a system administrator install MapInfo Professional using a commandline.

Topics in this Section:

- ◆ **Silent Installation Procedures for System Administrators50**
- ◆ **Installing Silently on Vista Operating System51**
- ◆ **Activating and Returning Licenses Silently52**

Silent Installation Procedures for System Administrators

Silent installations allow you to repackage MapInfo Professional for deployment within your company so your users do not have to enter user- or company-specific information, path information, a serial number, or an access code.

Note You may also be interested in reviewing the *MapInfo Professional Workgroup Guide* for file sharing to use this installation model for deploying MapInfo Professional.

The MapInfo Professional installation setup.exe indicated in the steps below can be found on the installation CD (d:\) in this directory:

```
\Install\MI_PRO\DISK1
```

In general, the silent installation process goes like this:

1. Place the installation CD in the target computer's disk drive.
2. From the command line on the target computer, type:

```
[drive and path to setup exe]:setup.exe /s /v"[Parameters for MSI]" for  
a silent installation"
```

where PARAMETERS for MSI are the parameters you set to populate the msiexec .

For example:

```
d:"\Install\MI_PRO\DISK1\setup.exe /s /v"/qb  
INSTALLDIR="[PathTo]\MapInfo\OtherThanStandard\Professional 10\  
USERNAME="MyUser" COMPANYNAME="MyCompanyName"  
PIDKEY=MySerialNumber ACCD=MyAccessCode"
```

Note The command line parameters for the installer can not contain "~","/".

The parameter /qb tells the msiexec command to launch the install with a basic interface. That does not require any user action and allows the user to respond to the UAC in Vista.

There should be no space in between Variable=Content. A space is used as a separator in between parameters.

Parameters for user information:

```
USERNAME=User Name  
COMPANYNAME=Company Name
```

Parameters for installation target information:

```
INSTALLDIR=Install Directory  
CRYSTALRINST=False (Use this parameter to decline the installation of Crystal Reports,  
installed by default)
```

Parameters for licensing information:

```
PIDKEY=Serial Number  
ACCD=Access Code  
LSNAME=License Server Name  
LSPN=License Server Port Number
```

Parameters for activating node lock and distributed licenses silently:

ACTLIC=True - for silent automatic NODE LOCK and DISTRIBUTED activate licenses

RETLIC=True - for silent return licenses

LICLOG=Filename for log files

BORROW=#days or True (If no specific number of days are entered, True is a valid input and results in a # of days)

SDRLYN=False (Use this parameter to see no license transfer dialog when the user uninstalls. The license stays on the system if not RETLIC=True).

Note Parameters ACTLIC and RETLIC are False by default.

For concurrent licenses the parameters for the license server name and license server port number must also be included:

1. Place the installation CD in the target computer's disk drive.
2. From the command line on the target computer, type:

```
"d:\Install\MI_PRO\DISK1\setup.exe /s /v"PARAMETERS"
```

where PARAMETERS are the parameters you set to populate the msiexec.

For example:

```
"\Install\MI_PRO\DISK1\setup.exe /s /v"/qb  
INSTALLDIR="\"[PathTo]\MapInfo\OtherThanStandard\Professional 10\""
```

Note All of the Microsoft supported parameters for working with the MSIEXEC command are documented on the Microsoft web site. Search the term "MSIEXEC command line parameters" to find this detailed information.

Look for the type of installation you want to perform from the options below and follow the corresponding instructions. In each of the install scenarios described below, the serial number and access code parameters are given in the following format:

- PIDKEY=MI#####
- ACCD=#####

Substitute the appropriate serial number and access code when you perform the silent install.

Installing Silently on Vista Operating System

You cannot perform a completely silent install of MapInfo Professional on Windows Vista computers. The command-line options /q and /qn do not work on Vista. These options turn off the user interface during the installation, which suppresses the Windows Vista User Access Control (UAC). Users must interact with the UAC to provide the necessary credentials to run the installation as an administrator. If the user interface is turned off, the installation is terminated without warning because the UAC cannot gather the appropriate credentials.

To work around the problem, use the /qb option in the command line when you run the silent install. This option gives the installation a basic user interface and allows the UAC to display on the screen.

Activating and Returning Licenses Silently

To perform a silent install on a Windows Vista computer using the /qb option:

1. Place the installation CD in the target computer's disk drive.
2. From the command line on the target computer, type:

```
"d:\Install\MI_PRO\DISK1\setup.exe" /s /v"/qb USERNAME=\"MyUser\"  
COMPANYNAME=\"MyCompanyName\"PIDKEY=MI##### ACCD=#####"
```

where:

PIDKEY=MI##### is the product serial number

ACCD=##### is the access code

3. When User Access Control displays on the screen, click **Allow**.

For concurrent licenses, the license server name and port number parameters must be included:

```
LSNAME="LicenseServerName"  
LSPN="LicenseServerPortNumber"
```

Substitute the appropriate license server name and port number when you perform the silent install.

Activating and Returning Licenses Silently

Information Technology engineers may want to activate or return MapInfo Professional node-locked or distributed licenses silently, using a log file for reports. The return process described in this section can also return a borrowed license to the server. This section describes these processes.

Activating a Node-Locked or Distributed License Silently

A node-locked license is a permanent license that originates from the Pitney Bowes Business Insight FNO server. A distributed license is a permanent license that originates from a License Server owned by your company. This same process works for both types of license activations.

Note Before making any hardware changes to your PC (such as disk re-formatting) please remember to transfer your activated license back to Pitney Bowes Business Insight or to your License Server. After your hardware has been changed you may then re-activate your license.

To activate a node-locked or distributed license silently:

1. Collect the information you need to install MapInfo Professional on the client's computer, including the appropriate serial number and access code. For distributed licenses, you also need to enter your license server's name and port number.
2. From the client computer's command line, type the following and press **Enter**:

```
<path to application>\MapInfow.exe -ActivateLicense c:\mylog.txt
```

where c:\mylog.txt is the path and name of a log file that tracks the details (successes and errors) of the activation process. The log file is optional.

Note If you do not specify a log file, as in the example below, the application creates a file called **activatelicence.log** in your temp folder.

```
<path to application>\MapInfow.exe -ActivateLicense
```

One of these events occurs:

- If the serial number begins with MID, the application attempts to activate a distributed license
- If the serial number begins with MIN, the application attempts to activate a node-locked license
- There was an error in the activation process that requires correcting

To view the results of the activation process after it is complete, open the log file with any text editor. Possible log file messages include:

Message	What to Do
Your node lock license was activated successfully.	The activation process is complete.
Your distributed license was activated successfully.	The activation process is complete.
A license was already activated. No new license is activated.	The activation process is complete.
One of the license components is incorrect or missing	Check the log file to see which component (serial number, activation code, or for distributed licenses, server name or port number) is missing or incorrect.
No license was activated as your license appears to be a concurrent or borrow type license.	Check your License Server and to review the type(s) of licenses that are available. Your client may need to get a concurrent or borrow a license instead. See Starting and Activating MapInfo Professional on page 23 for more details on these license types.

Returning a License Silently

Before making any hardware changes to your PC (such as disk re-formatting) please remember to return your activated license back to Pitney Bowes MapInfo or to your License Server. After your hardware has been changed you may then re-activate your license.

You can return a node-locked, borrowed, or distributed license to the Pitney Bowes MapInfo FNO or your License Server using these instructions:

- From the client computer's command line, type the following and press **Enter**:

```
MapInfow.exe -ReturnLicense c:\mylog.txt
```

where c:\mylog.txt is the path and name of a log file that tracks the details (successes and errors) of the return process. The log file is optional.

Note If you do not specify a log file, as in the example below, the application creates a file called **returnlicense.log** in your temp folder.

```
<path to application>\MapInfow.exe -ReturnLicense
```

Activating and Returning Licenses Silently

One of these things occurs:

- The license is returned to the Pitney Bowes MapInfo FNO server or your License Server
- An error occurs preventing the return of the license

To view the results of the return process after it is complete, open the log file with any text editor.

Possible log file messages include:

Message	What to Do
Your distributed license was returned successfully to the license server <ServerName>.	The return process for the distributed license is complete.
Your borrowed license was returned successfully to the license server <ServerName>.	The return process for the borrowed license is complete.
Your node license was returned successfully to Pitney Bowes MapInfo.	The return process for the node-locked license is complete.
If returnable license was found but the system could not return it, the system posts an error message describing the error.	Check the log file for the details of the error and correct the problem either on the client's machine or in your License Server, as needed.
No license was returned as no distributed license was found.	Check the About this Product dialog box to ensure that the license is distributed and try the return process again.
No license was returned as no server license was found.	Check your License Server to make sure the license is available and the server is up. Then try the return process again.
No license was returned as no node- lock license was found.	Check the About this Product dialog box to ensure that the license is node locked and try the return process again.

Advanced Configuration Options for System Administrators

This chapter helps a system administrator configure MapInfo Professional.

Topics in this Section:

- ◆ **Controlling Advanced System Settings56**
- ◆ **Controlling the Location of Application Data Files during Installation57**

Controlling Advanced System Settings

MapInfo Professional has some advanced system settings that cannot be configured through a dialog box. These settings allow you to control several low-level, technical aspects of how MapInfo Professional runs. Most users do not need to worry about these advanced settings.

For example, MapInfo Professional has a Dynamic Data Exchange (DDE) time-out setting, which controls how long MapInfo Professional tries to communicate with other applications during DDE communications. If you run a MapBasic application, and that application encounters time-out errors during DDE, you may want to increase the DDE time-out setting. To modify one of MapInfo Professional's advanced system settings (such as the DDE time-out setting), use this procedure.

Modifying the Windows Registry

MapInfo Professional stores system settings in the Windows registry. To edit the Windows XP registry, use the REGEDT32 program.

CAUTION: Be very careful when editing the registry; damaging the registry can cause serious problems in your operating system.

For example, to set MapInfo Professional's Dynamic Data Exchange (DDE) time-out setting, locate the following key in the registry:

```
HKEY_LOCAL_MACHINE\SOFTWARE\MapInfo\MapInfo\Common
```

Within that key, edit the DDeTimeout value. If there is no value by that name, create a new value of type string, and assign the name DDeTimeout to the value. Set the value's data to be a number, representing the number of milliseconds (for example, enter 30000 to specify a time-out of 30 seconds). For more on editing the registry, see the online help for REGEDIT or REGEDT32.

Descriptions of Advanced Registry Settings

This section describes advanced settings that are stored in the registry.

DDeTimeout = *number*

This setting controls MapInfo Professional's time-out setting in DDE conversations where MapInfo Professional is the client (the application that initiates a conversation). The *number* represents milliseconds. The default value is 10,000 milliseconds (ten seconds). If you run a MapBasic application that attempts to initiate a DDE conversation, but the conversation fails because the server application does not respond within the time-out period, you may need to increase the DDeTimeout number.

PolygonMode = *number*

The *number* is 0 (zero) or 1 (one). A value of 1 (the default) renders complicated polygons, such as those containing holes or many nodes, as-is (all at once). If the object is very large, this may cause an error when printing using an Adobe PDF printer driver.

A value of 0 manipulates the polygon with holes to draw as multiple polygons, which may cause seams and gaps to appear when printing these objects using an Adobe PDF printer driver. This is how MapInfo Professional managed polygons prior to the introduction of this registry setting in version 9.5.

OffscreenBitmap = *number*

The *number* is 0 (zero) or 1 (one). A value of 1 (the default) indicates that MapInfo Professional will process off-screen bitmaps when drawing a map. This means that if you cover a Map window, and then bring the Map window to the front again, the map redraws instantly. If you set this setting to zero, MapInfo Professional will not process off-screen bitmaps. This means that when you bring a Map window to the front, MapInfo Professional will redraw the map. If you are using a video driver that is problematic, and encounter video problems with Map windows, you may eliminate those problems by setting the OffscreenBitmap number to 0.

MaxFiles = *number*

This setting must be an integer from 10 to 507, indicating how many files MapInfo Professional can open simultaneously. This setting does not limit the number of tables you can open, but it does limit the number of tables you can edit at one time (the number of tables that have unsaved edits). The default value is 29. If you need to work with more files simultaneously, set *number* to 507.

MaxORACLETTILES = *number*

The *number* is 0 (zero) or 1 (one). This setting applies when working with Quad-Tree indexed Oracle tables from versions of Oracle that are older than version 10. A value of 0 (zero) causes MapInfo Professional to disable spatial query and return all records using client-side clipping. A value of 1 (one) or more specifies the maximum number of tiles to use per geometry to refine a spatial query. When creating a spatial index using the old Quad-Tree method, you specify the number of tiles to use. This value lets you further refine the search by specifying the max number of tiles to use.

Improving Performance for MapInfo Professional

To improve MapInfo Professional's performance, you can increase the speed of the processor in the machine. A video accelerator card will increase the speed of the redraw. It will not speed up the initial draw of the map, but all subsequent redraws will be faster. A faster disk cache will also improve performance, as will adding memory.

Controlling the Location of Application Data Files during Installation

By default, the setup program for MapInfo Professional installs application data files to locations that make sense for the typical user. After installing the product, the user is free to move one or more of the application data files to another predefined location and MapInfo Professional will find that file. For example, the administrator of a machine might move MAPINFOW.PEN from the per user area (its default location) into the install directory so all users on that machine will share the same set of pens. For IT personnel responsible for a large number of MapInfo Professional installs, it is not practical to manually move application data files to realize the desired configuration.

To solve this problem, create a setting file, MODE.INI, to specify the location of application data files prior to installing MapInfo Professional.

1. Copy the installation files to a read-write location.
2. Create a MODE.INI file in the root directory of the installer.

Code	Description	Location
1	per user, roaming	<Current User>\Application Data
2	per user, not roaming	<Current User>\Local Settings\Application Data
3	per machine	<All Users>\Application Data
4	program directory	<Install Dir>

3. Open MODE.INI into any text editor.
4. Edit MODE.INI, modifying the code associated with the application data file/folder whose location you wish to change.
5. Install MapInfo Professional.

The following is a list of predefined locations for application data files supported by MapInfo Professional, and the corresponding numeric code to be used in MODE.INI.

The following is a list of application data files/groups and their default locations:

Filename	Default Location
CustSymb	per user, roaming
GraphSupport	per machine
LayoutTemplate	per using, roaming
MAPINFOW.ABB	program directory
MAPINFOW.CLR	per user, roaming
MAPINFOW.FNT	per user, roaming
MAPINFOW.MNU	program directory
MAPINFOW.PEN	per user, roaming
MAPINFOW.PRJ	program directory
ThmTmplt	per user, roaming
WFSWMS.xml	per using, roaming

MODE. INI File Example

Create a text file with the following syntax:

```
GraphSupport = 3
CustSymb = 1
ThmTplt = 1
MAPINFOW.CLR = 1
MAPINFOW.FNT = 1
MAPINFOW.PEN = 1
MAPINFOW.ABB = 4
MAPINFOW.PRJ = 4
MAPINFOW.MNU = 4
```

